

Archaeological Perspectives on the New Philadelphia Townsite



"Finding Our Better Selves"
2021 Likes Lecture Series

June 1st, 2021

Terrance J. Martin
Curator Emeritus of
Anthropology
Illinois State Museum

A Collaborative Project

Funded by the National Science Foundation
Research Experiences for Undergraduates
Program



Dr. Paul Shackel
U of Maryland

Dr. Christopher Fennell
UIUC

Dr. Anna Agbe-Davies
DePaul U & UNC

Illinois State Museum

Dr. Michael Hargrave, CERL

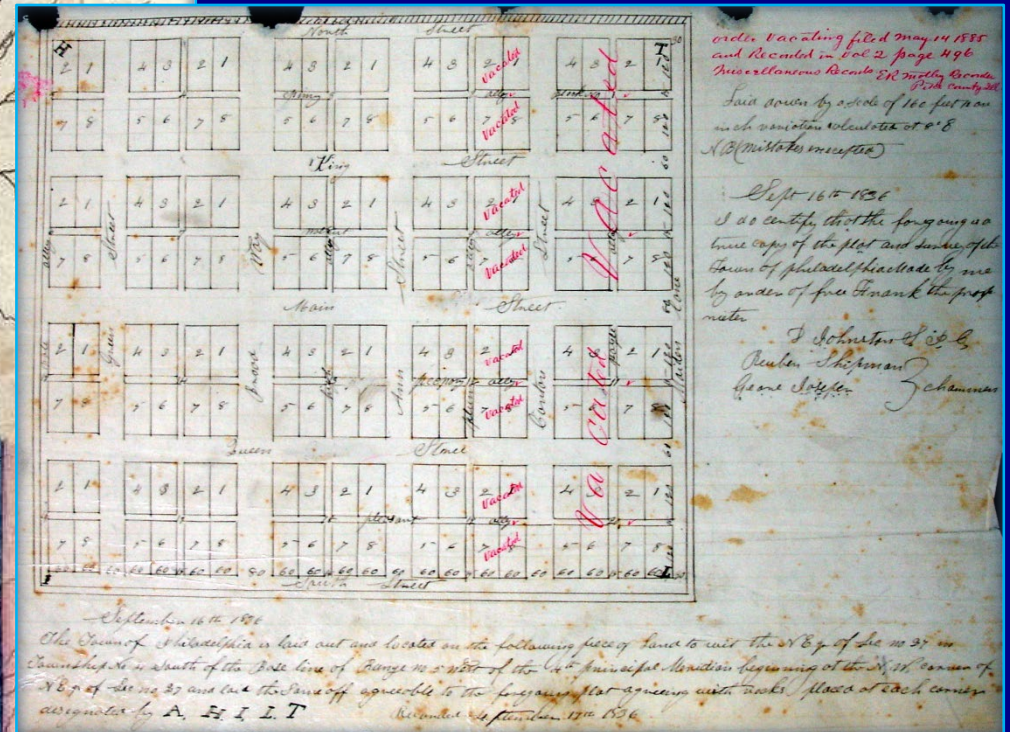
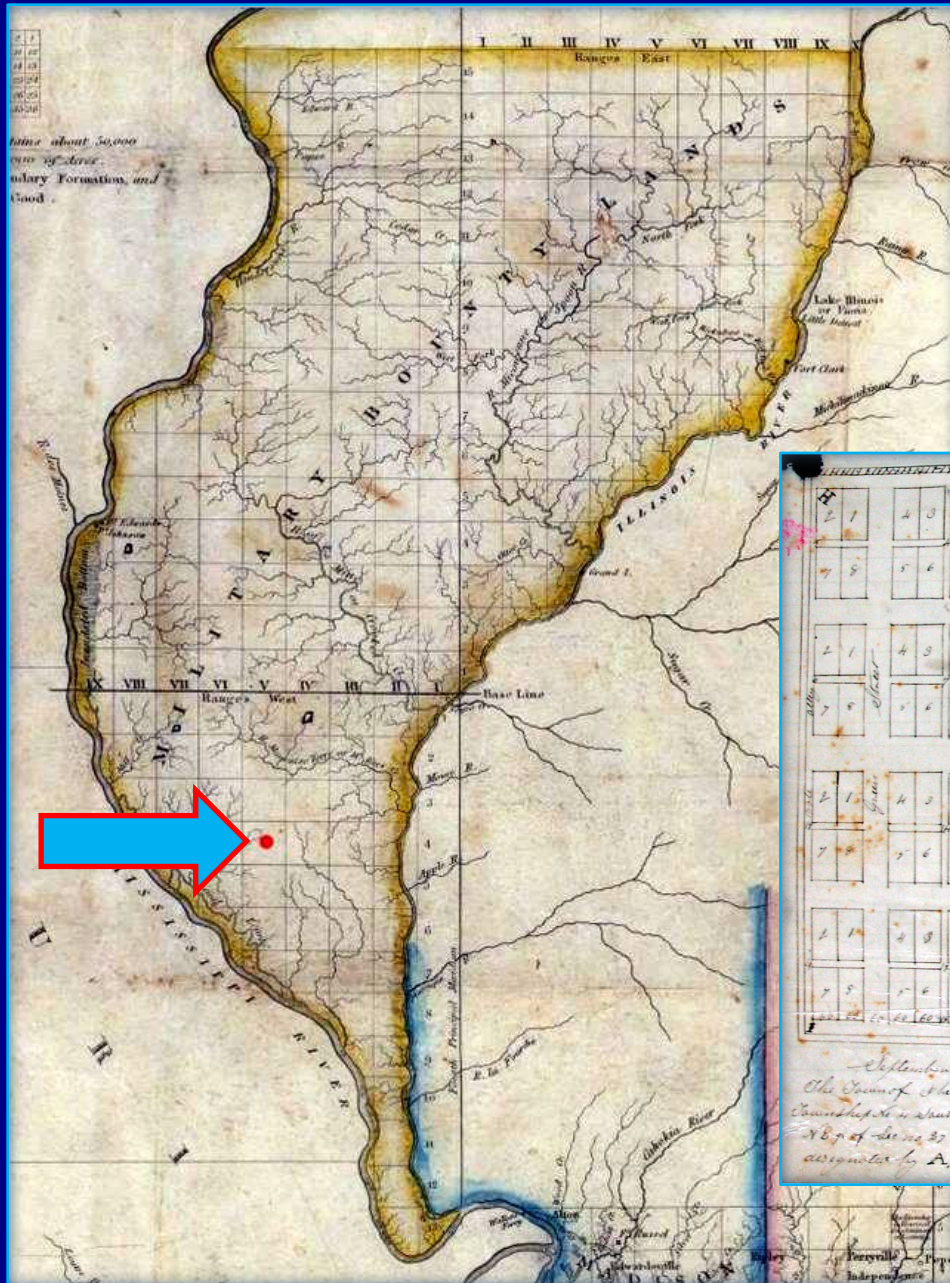
Dr. Lynn Fisher, UIS

Claire Fuller Martin

Likes Land Surveyors, Inc.

The New Philadelphia Association

New Philadelphia, Pike County In the old "Military Tract"



Original Town Plat, 1836: 144 lots
on 42 acres in Hadley Township

Free Frank McWorter

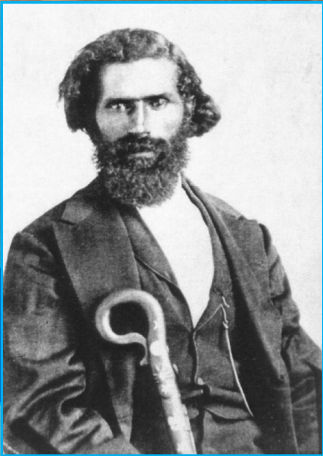
1777 - 1854



Shirley McWorter-Moss, Sculptor

- ❖ Born in South Carolina
- ❖ Brought to Kentucky in 1795 by his owner; established saltpeter mining operation
- ❖ Married Lucy about 1799
- ❖ Purchased Lucy's freedom for \$800 in 1817; his own in 1819
- ❖ Exchanged property in Kentucky for land in Pike County, IL, 1830; moved to IL, 1831
- ❖ Acquired more than 500 acres; allocated 42 acres for a town site in 1836
- ❖ Purchased freedom of at least 16 relatives

Goal: learn about all families at New Philadelphia

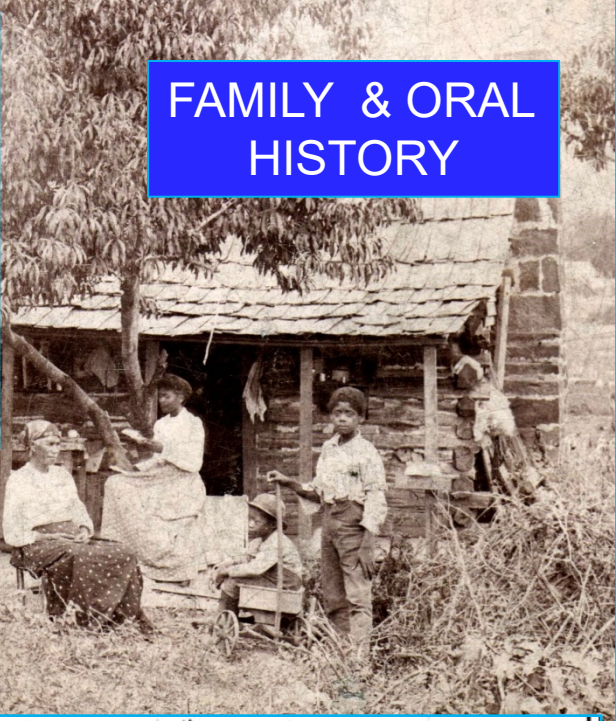




DEEDS



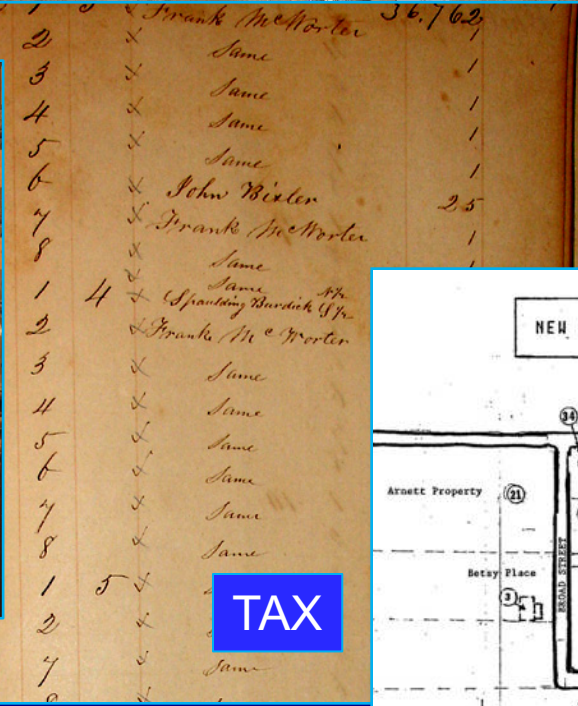
ARCHAEOLOGY



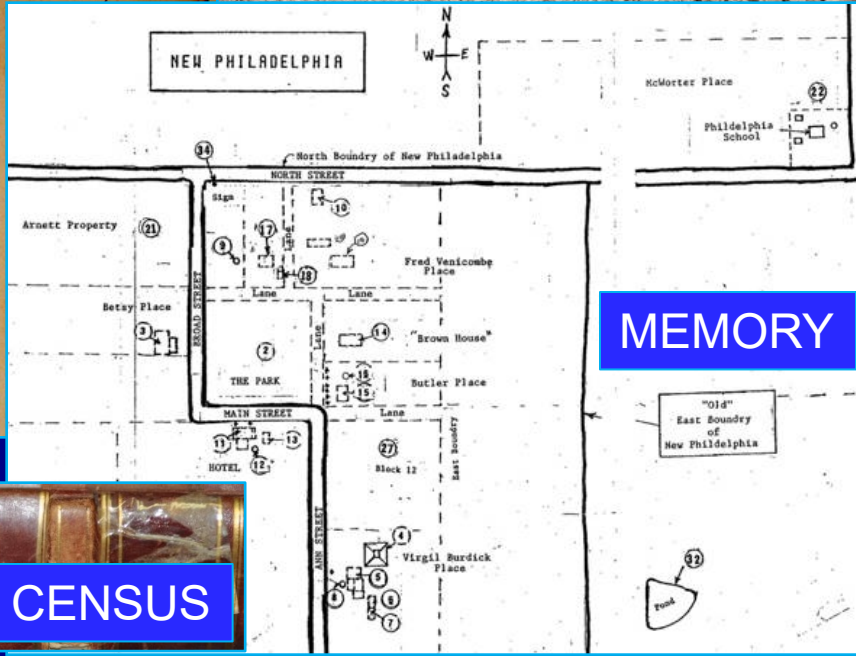
FAMILY & ORAL HISTORY



SCHOOL



TAX



MEMORY



PROBATE

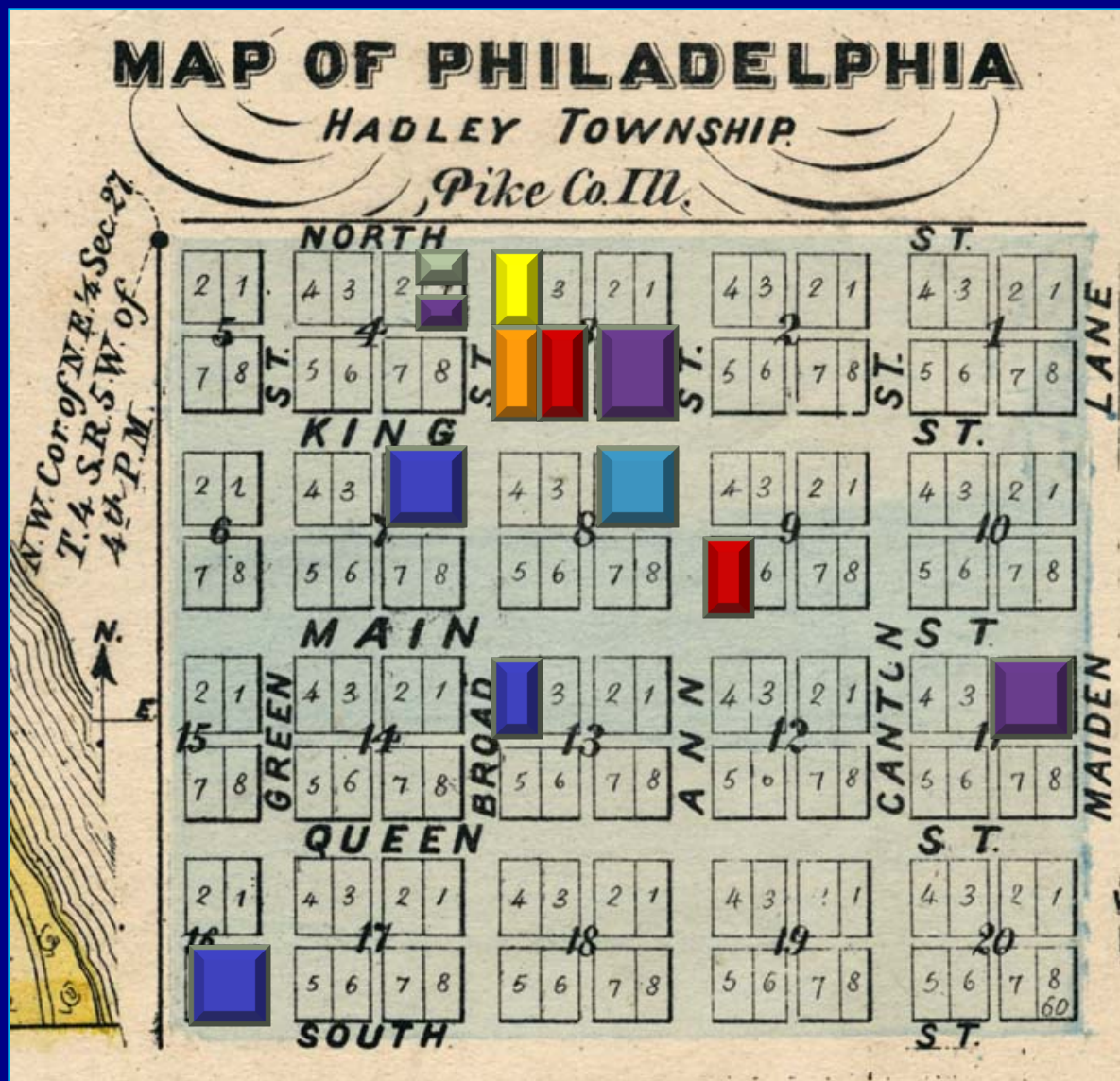


CENSUS

Frank McWorter

1853

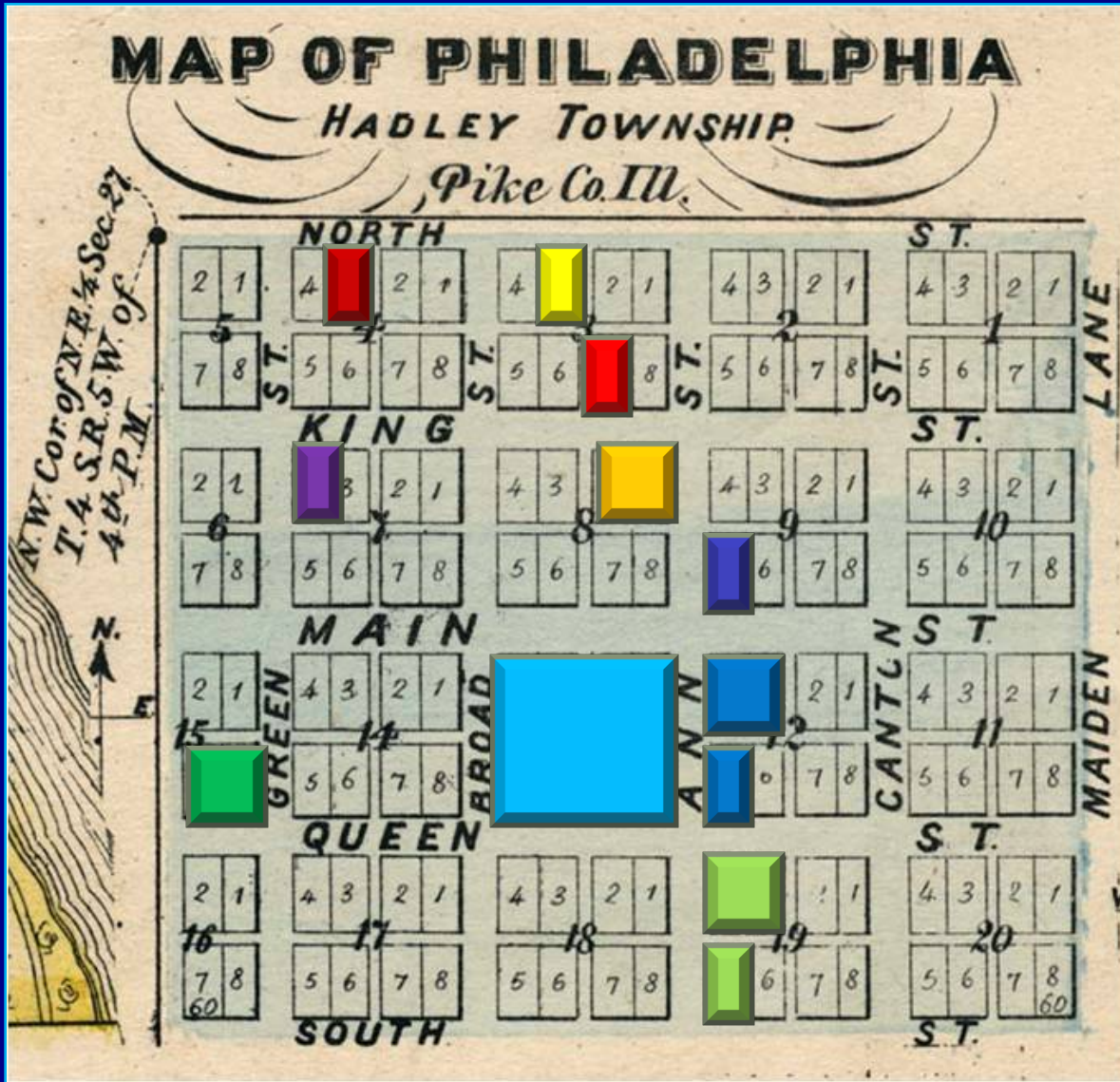
PIKE COUNTY COLLECTORS BOOK



- ❖ Alexander Clark
- ❖ D. A. Kittle
- ❖ Kezia Clark
- ❖ Spaulding Burdick
- ❖ Squire McWorter
- ❖ Calvin Arnold

1870

PIKE COUNTY COLLECTORS BOOK



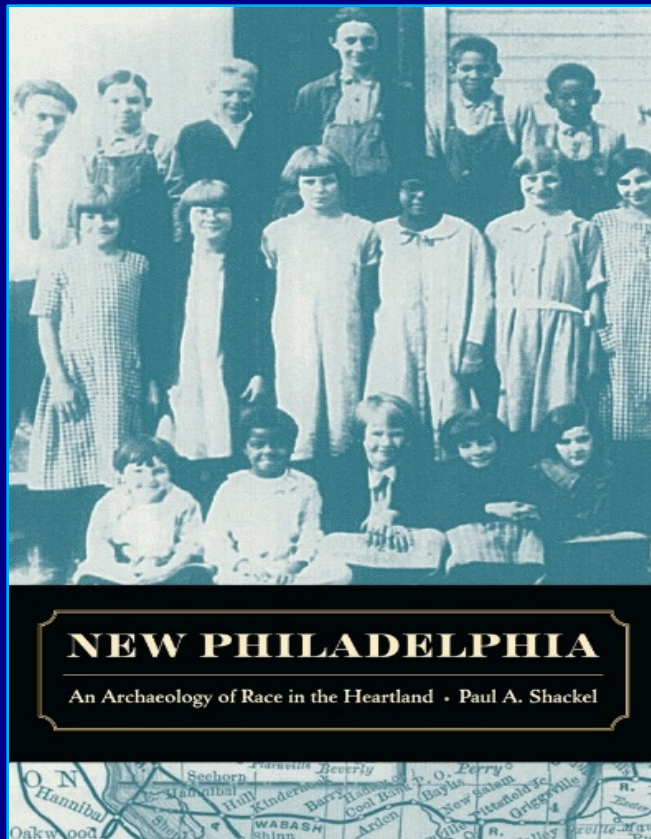
- ❖ **J.P. Hadsell** (non-resident)
- ❖ **A. B. Cobb**
- ❖ **Alexander Clark**
- ❖ **A. B. Johnson**
- ❖ **Benjamin Gray**
- ❖ **Kezia Clark** (non-resident)
- ❖ **G. W. Stewart**
- ❖ **Louisa McWorter**
- ❖ **Sylvester Baker**
- ❖ **Ziba Zellum** (non-resident)

Objectives:

- ❖ Understand the founding and development of New Philadelphia as a racially-integrated town;
- ❖ Explore consumer choices with attention to local markets and ethnic backgrounds of residents; how did these change over time?
- ❖ Compare dietary patterns between town lots in light of ethnic and regional backgrounds of households.

More about the archaeology:

For all technical reports: faculty.las.Illinois.edu/cfennell/NP/



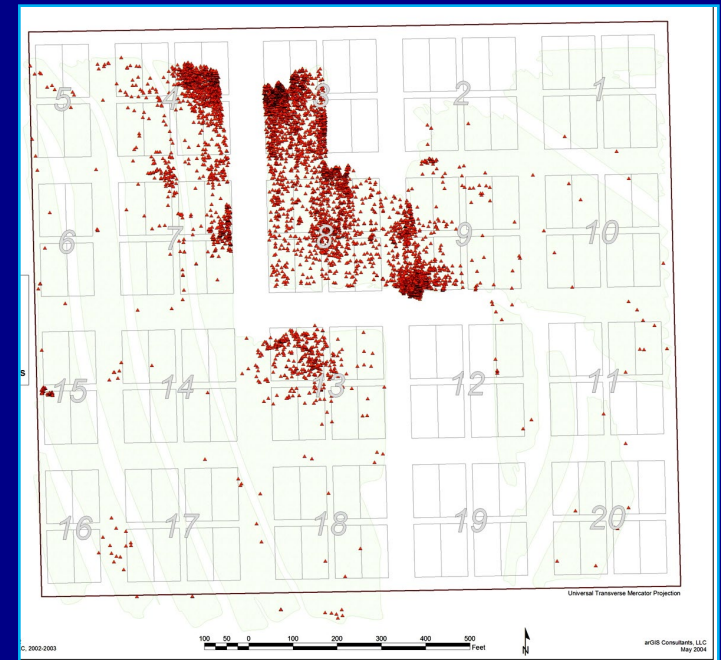
Paul A. Shackel,
2011

University of California Press

Archaeological Surface Survey in 2002-2003



Overlay of the 1836 plat over the 1939 aerial photograph;
produced by Likes Land Surveyors, Inc.



**The walkover survey:
Fall 2002 and spring 2003**





**Volunteers cleaning, sorting, and cataloging walkover survey artifacts
At the Illinois State Museum's Research and Collections Center.**

NSF-REU Investigations, 2004-2006; 2008, 2010-2011

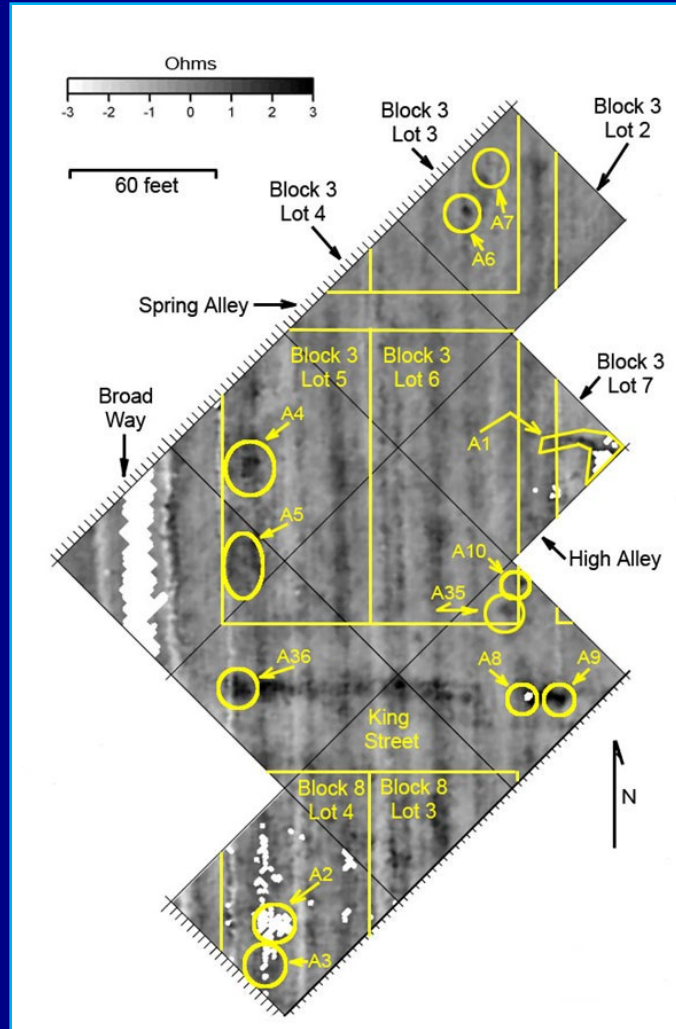


Geophysical Survey

by Dr. Michael Hargrave (CERL)



**Electrical
resistivity**



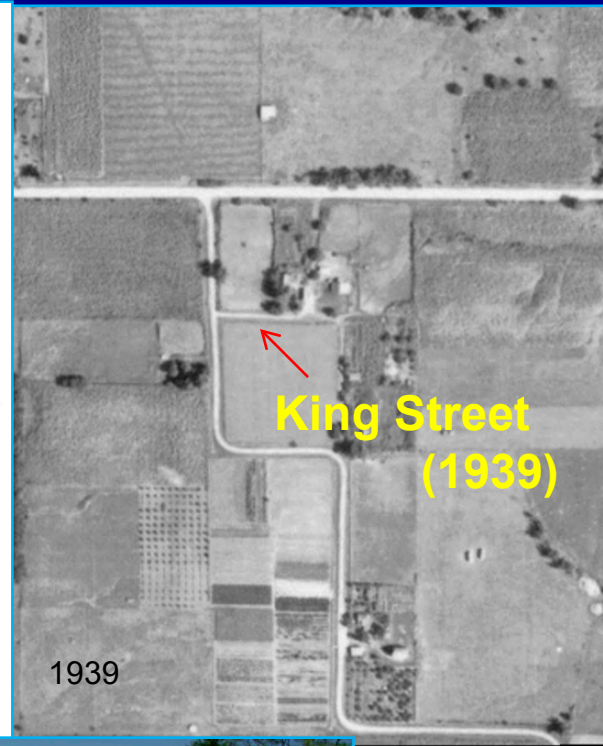
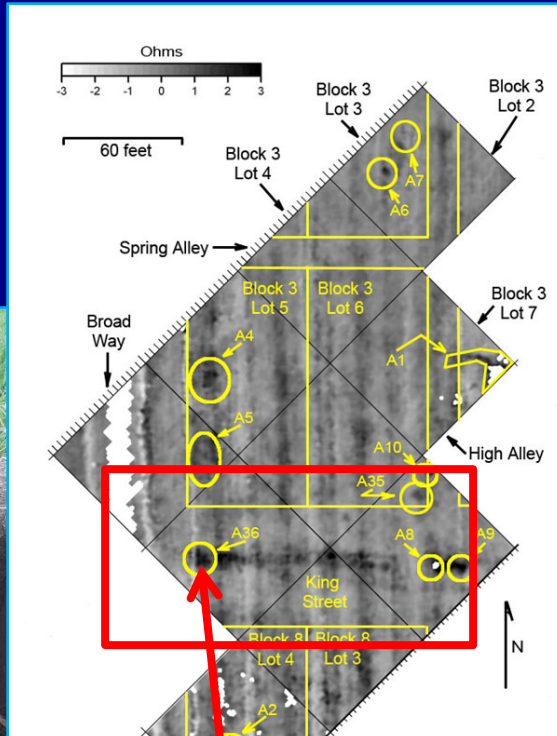
**Magnetic field
gradiometry**

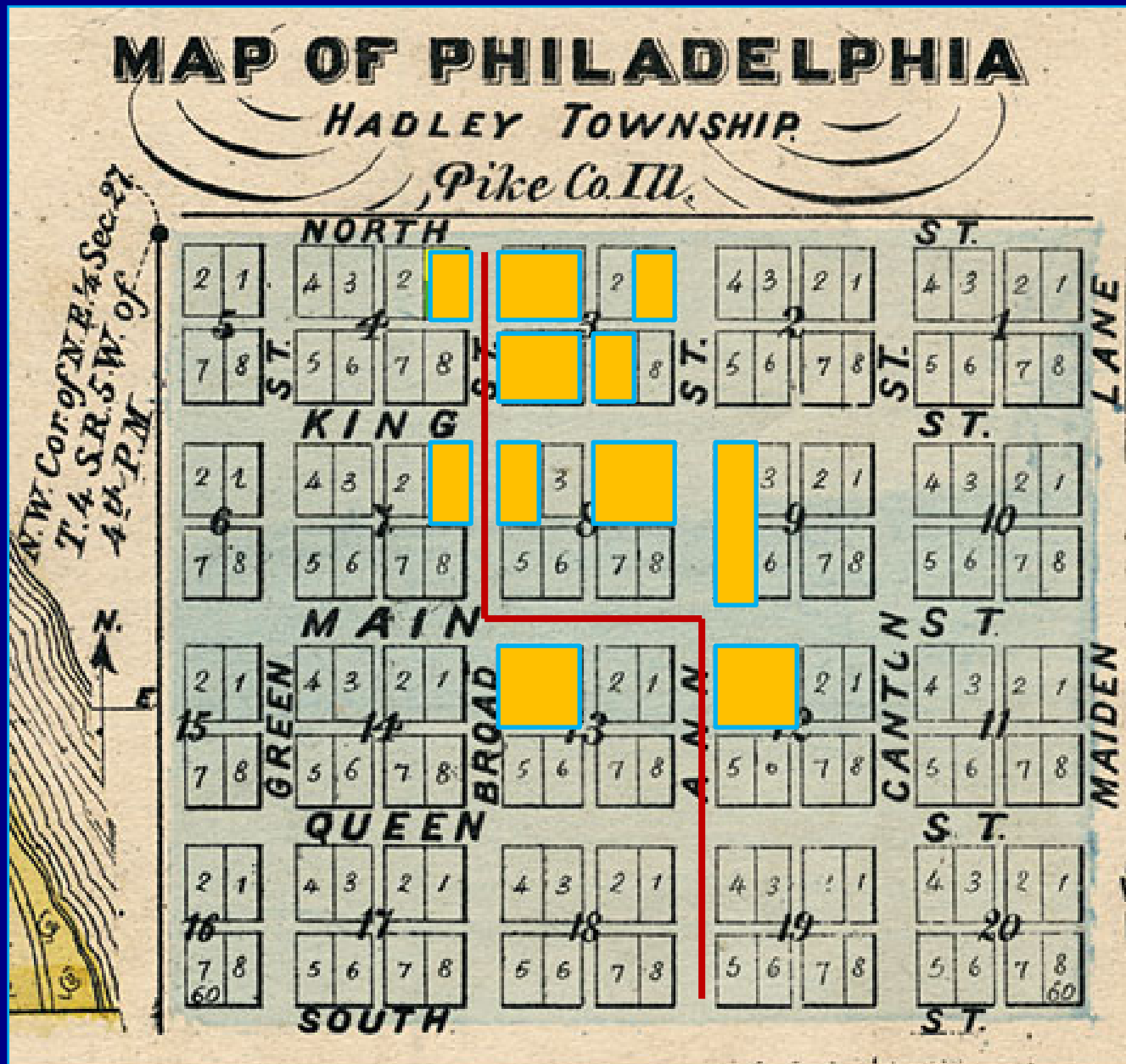
Excavating King Street, 2008



Pebble/cobble
lens 1 foot
beneath surface

Wheel ruts beneath
pebble lens





Archaeological excavations on **17 lots** within **7 blocks** (2004-2011)

Pike Co. Ill.

A 6x6 grid representing a board game layout. The streets are labeled as follows:

- Vertical Streets (Left to Right):** GREEN, BROAD, CANTON, MAIDEN.
- Horizontal Streets (Top to Bottom):** NORTH, KING, MAIN, QUEEN, SOUTH.

The grid contains 20 squares, numbered 1 through 20. The squares are arranged in a 4x5 grid. The squares are colored as follows:

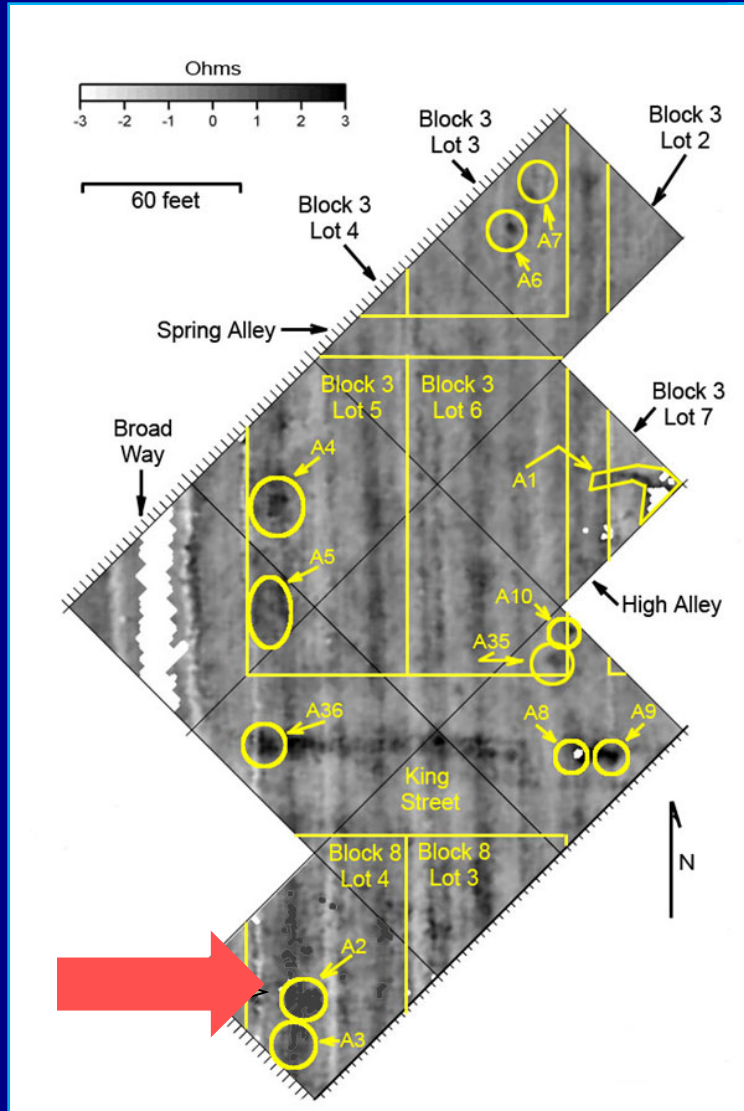
- Yellow Squares:** 1, 2, 3, 4, 5, 6, 7, 8, 9, 10, 11, 12, 13, 14, 15, 16, 17, 18, 19, 20.
- Red Star:** Located on square 10.

The squares are arranged in a 4x5 grid. The squares are numbered 1 through 20. The squares are colored as follows:

- Yellow Squares:** 1, 2, 3, 4, 5, 6, 7, 8, 9, 10, 11, 12, 13, 14, 15, 16, 17, 18, 19, 20.
- Red Star:** Located on square 10.

Archaeological excavations on **Block 8, Lot 4** (2004, 2005, 2006)

Coring Geophysical Anomaly A2 - Feature 4 in Block 8, Lot 4

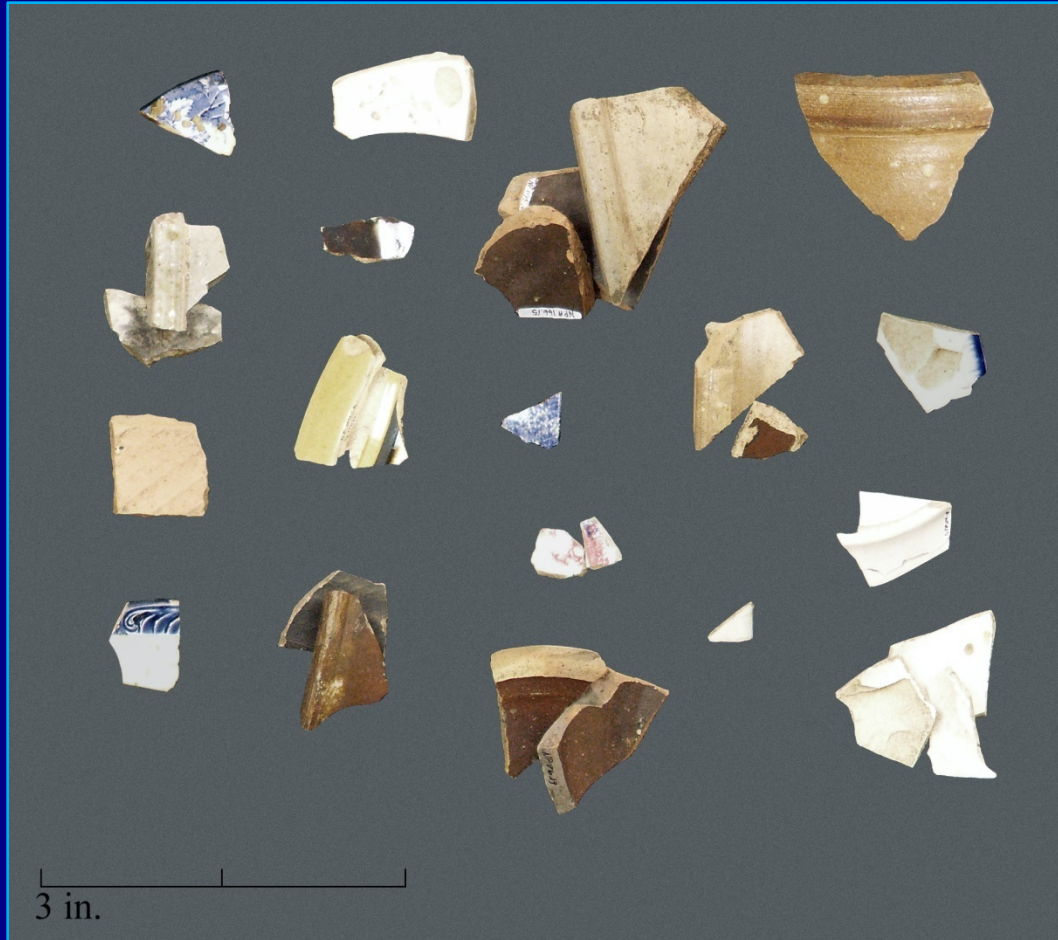


Block 8, Lot 4

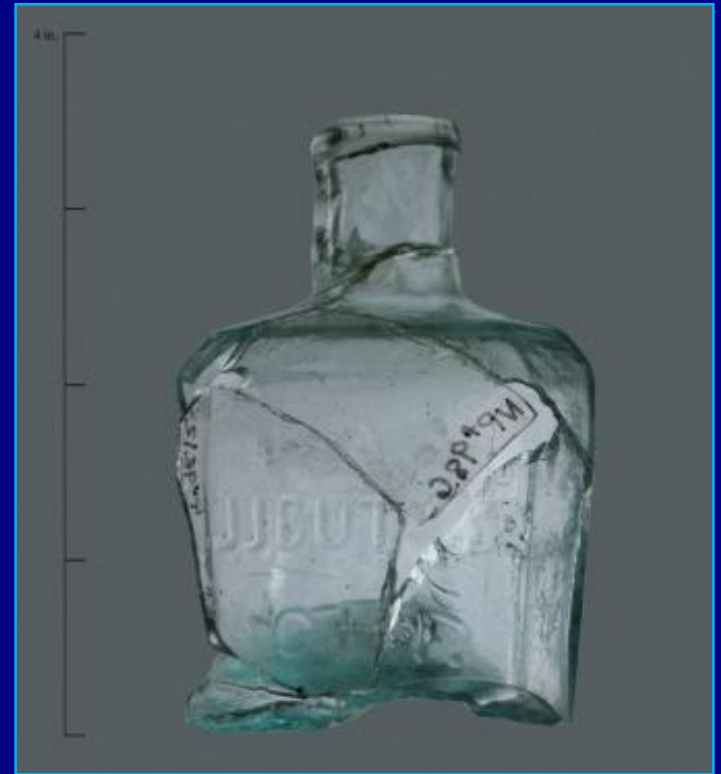


Feature 4
located within “The Park”
(Larry Burdick’s Memory Map)

Sample artifacts from Feature 4



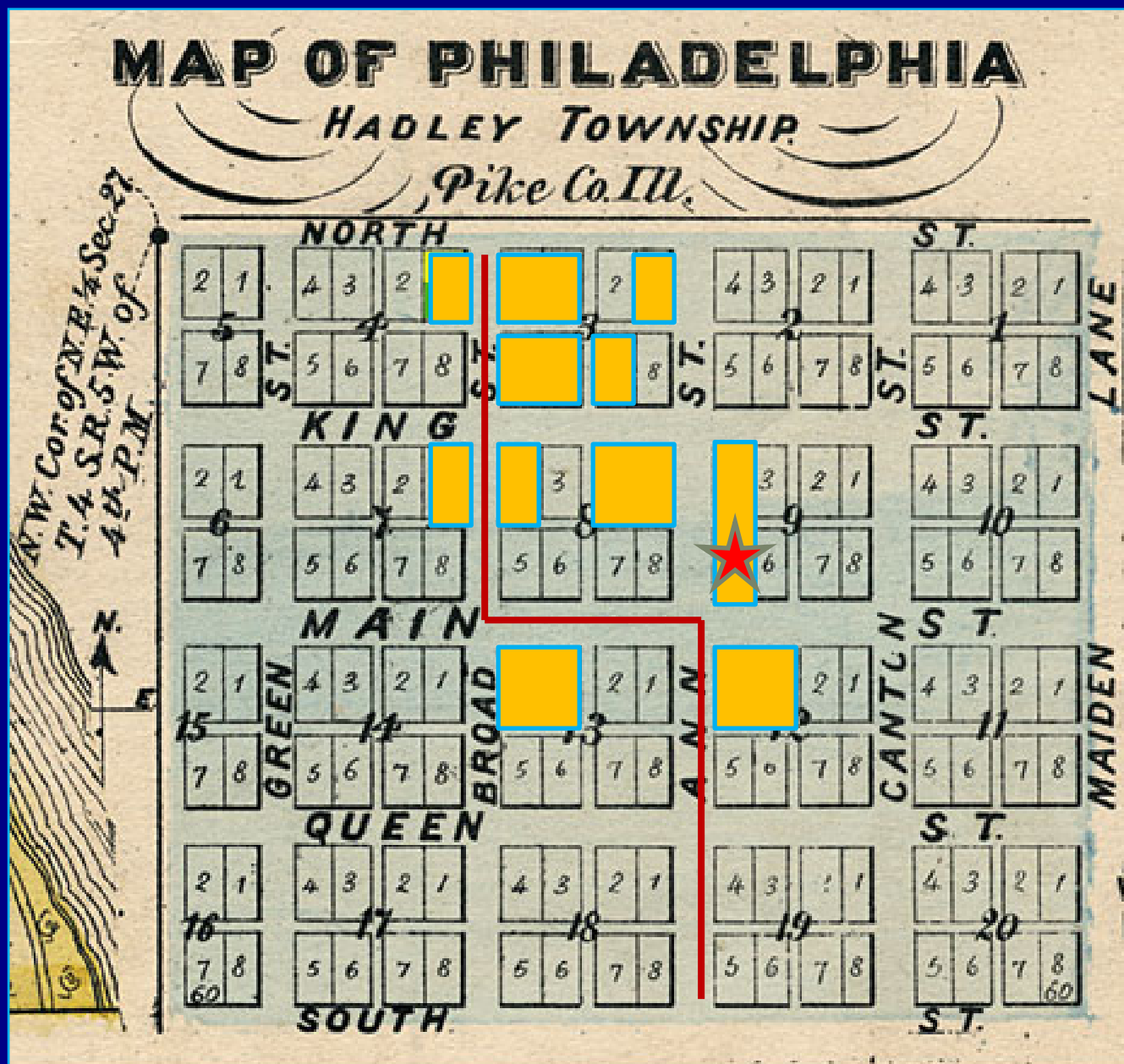
Ceramic sherds



**J.J. Butler Ink Bottle
1854-1860**

Block 8, Lot 4: Feature 4 (cistern or well)
artifacts: 1840s-1850s

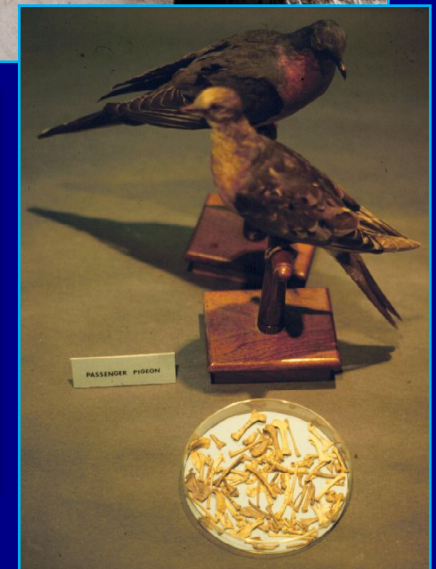
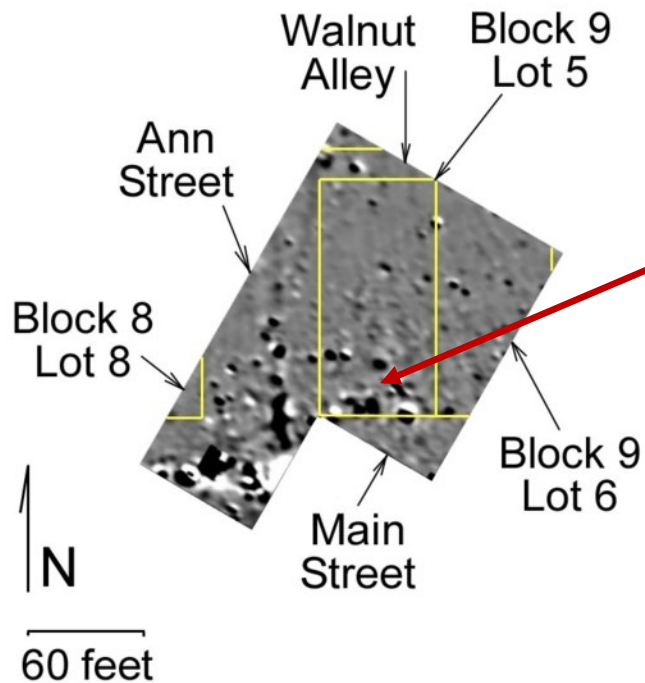


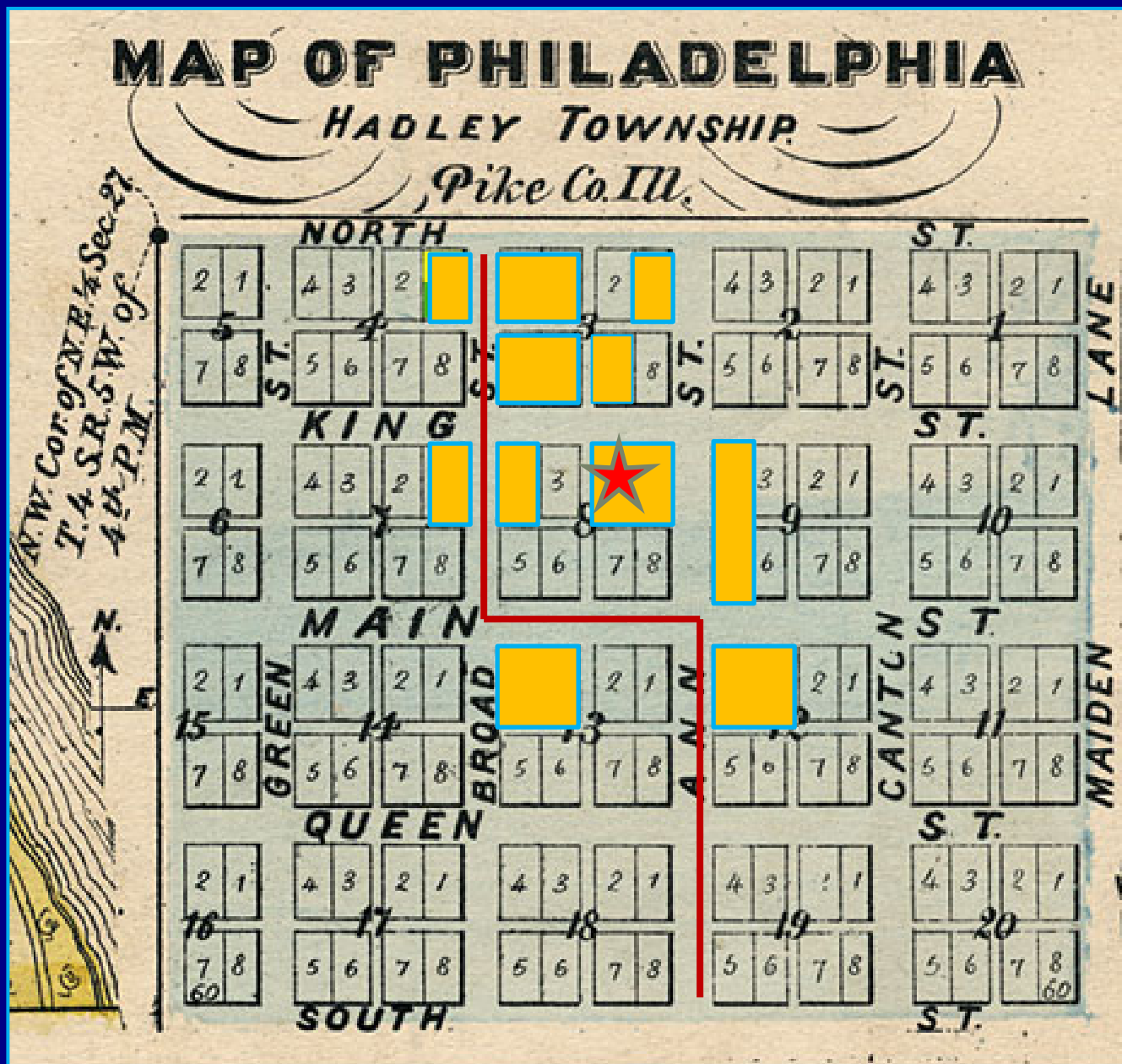


Archaeological excavations on **Block 9, Lot 5** (2004)

Block 9, Lot 5

Kezia Clark's family, 1854-1880; William Butler, 1880s-1911





Archaeological excavations on **Block 8, Lot 2** (2008)

Block 8, Lot 2: Feature 14 (cellar)



Possible residents:

Christopher Luce (1850)

Sarah McWorter (1860)

A. B. Cobb (1860-1870).

Lower fill – 1860s,

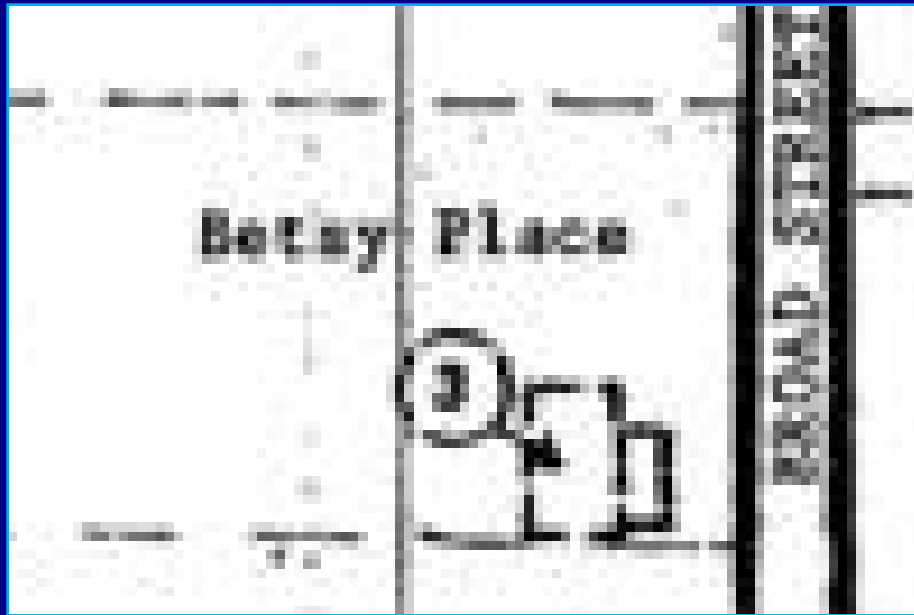
upper fill – architectural debris from 1870s.



Pike Co. Ill.



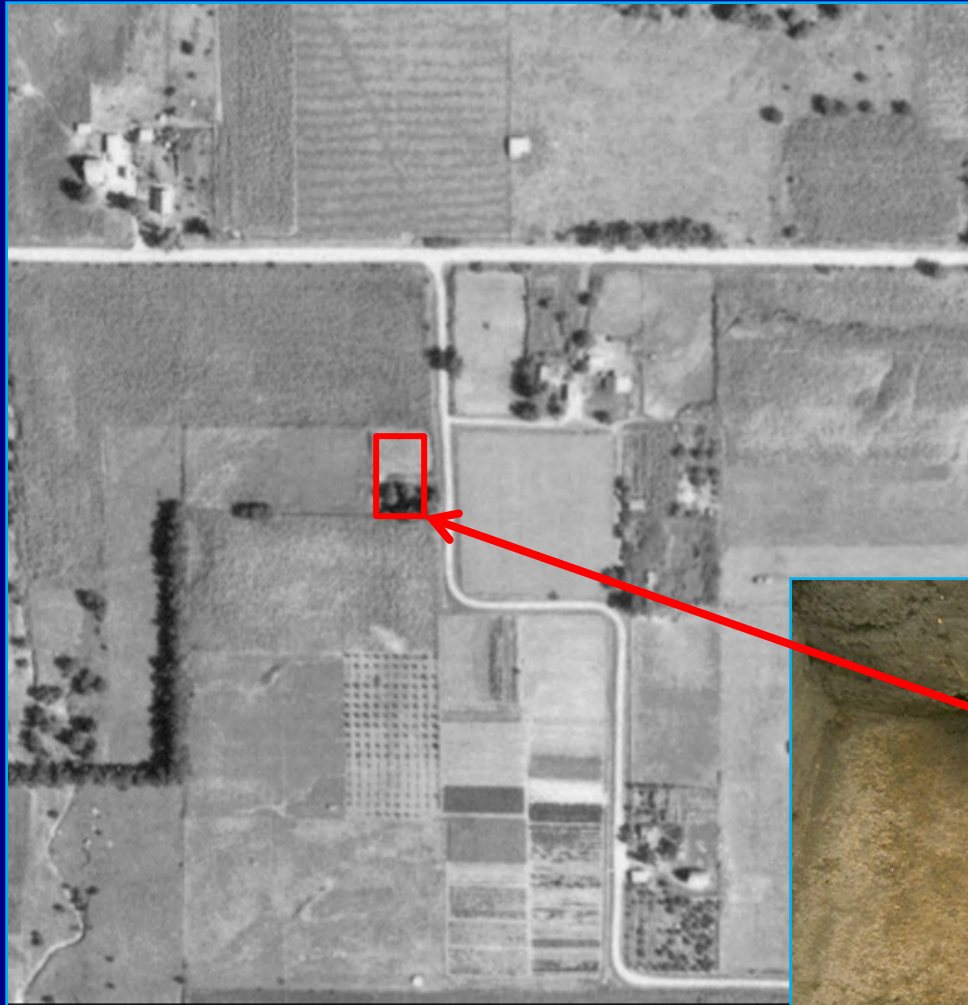
**1970s Burdick Memory Map of
New Philadelphia ca. 1930s-1940s:
Block 7, Lot 1**



Listed in deeds and census:

James Pottle (1848-52)
Christopher Luce (1850-52)
Squire McWorter (1853)
William Hadsell (1860s-70s)

Block 7, Lot 1



1845 tax record shows Lot 1 owned by Frank McWorter, valued at \$60.

Philadelphia

| | | | | |
|----|----|-----------------------|--------|-----|
| 1 | 3 | Frank McWorter | 36.762 | 229 |
| 2 | 4 | Same | | |
| 3 | 4 | Same | 1 | |
| 4 | 4 | Same | 1 | |
| 5 | 4 | Same | 1 | |
| 6 | 4 | John Bixler | 2.5 | |
| 7 | 4 | Frank McWorter | 1 | |
| 8 | 4 | Same | 1 | |
| 1 | 14 | Spaulding Burdick Jr. | 2.5 | |
| 2 | 4 | Frank McWorter | 2 | |
| 3 | 4 | Same | 2 | |
| 11 | 4 | Same | 2 | |
| 5 | 4 | Same | 2 | |
| 6 | 4 | Same | 2 | |
| 7 | 4 | Same | 3 | |
| 8 | 4 | Same | 3 | |
| 1 | 6 | Same | 3 | |
| 2 | 4 | Same | 3 | |
| 7 | 4 | Same | 3 | |
| 8 | 4 | Same | 3 | |
| 1 | 7 | Same | 6.0 | |
| 2 | 4 | Same | 2 | |
| 3 | 4 | Same | 2 | |
| 4 | 4 | Same | 2 | |



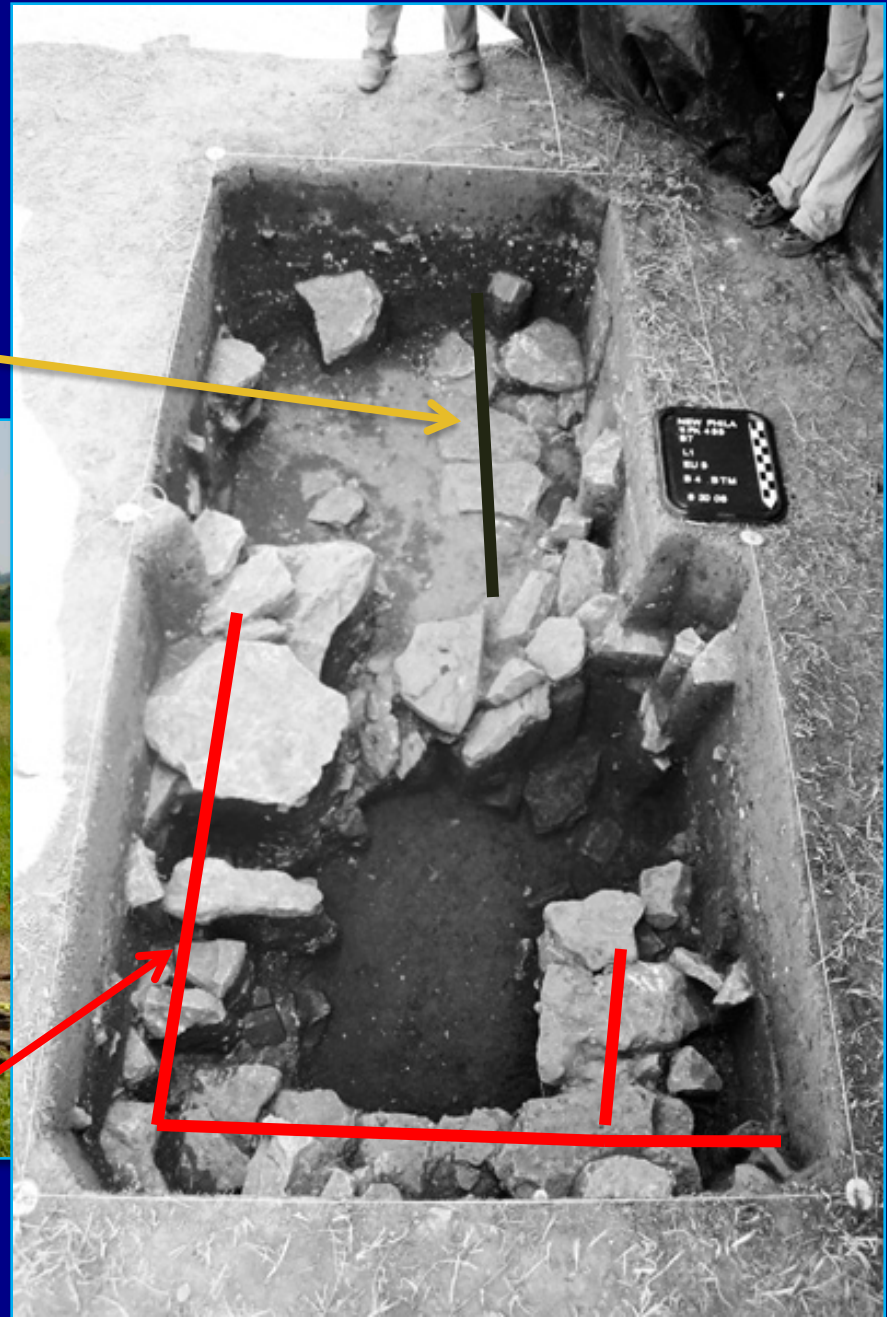
2004 excavation of 1870s house site

Block 7, Lot 1 (2008)

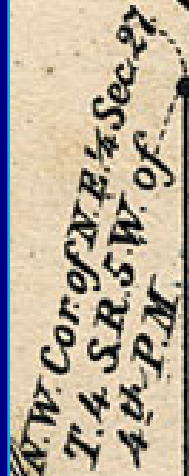
1840s house foundation
at lower level?



1870s house foundation
closer to surface



Pike Co. III.



Archaeological excavations on **Block 4, Lot 1** (2005, 2006)



**Block 4, se corner of Lot 1:
Feature 7 (pit cellar) filled during the 1840s**

**South half of lot sold to Spaulding Burdick
(shoemaker from New York) in 1846.**



Feature 13 –
cistern or well in
south half of lot;
filled during the
1840s

Block 4, Lot 1

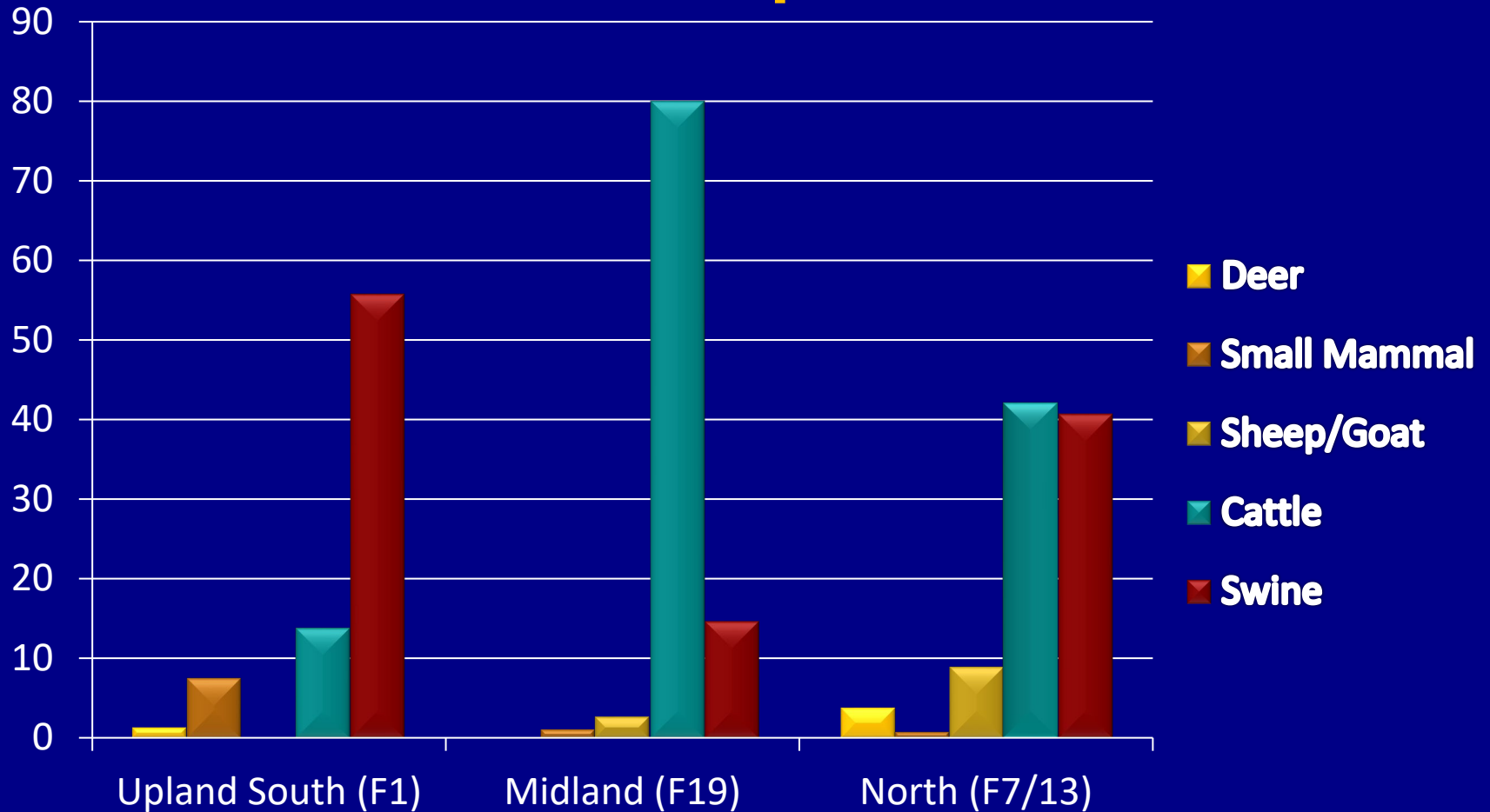


Feature 19: Privy or deep storage pit in north half of Block 4, Lot 1 (filled 1840s-1860s)



North half of lot sold to D.A. Kittle (merchant from Ohio) in 1848.

% biomass from mammal remains in New Philadelphia features



Pike Co. Ill.



Block 3, Lot 4: Feature 2: lime slaking pit





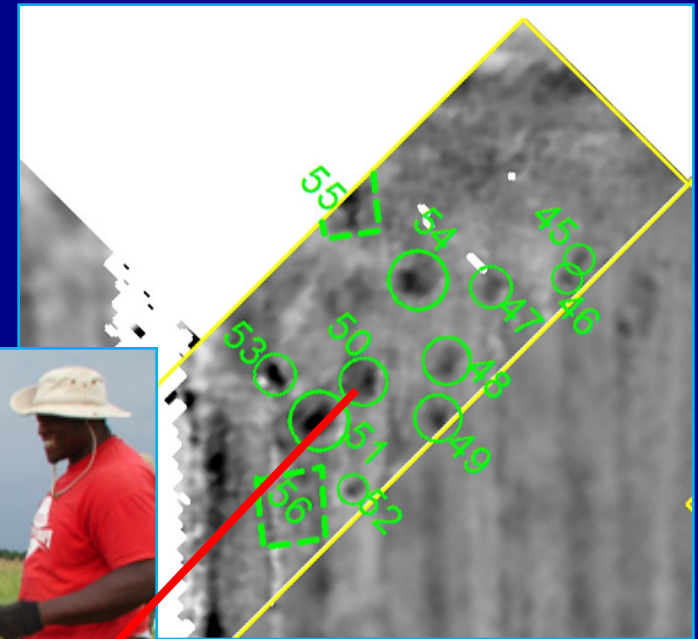
**Preserved example of artifact found in
the plow zone on Block 3, Lot 4**



General George H. Thomas, “The Rock of Chickamauga”

Block 3, Lot 4

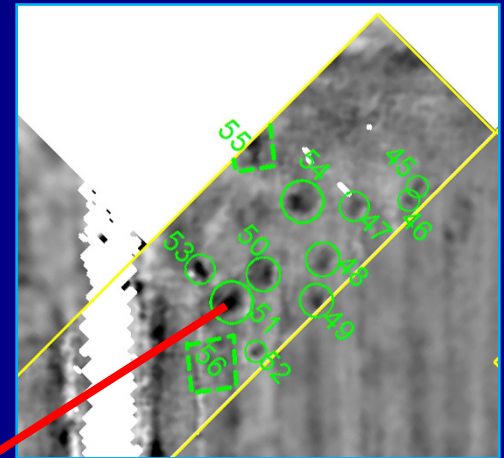
Feature 31 (chimney base)



Possible residents:
Alexander Clark (1865)
Jesse Hadsell (1866-78)
Wm Welbourne (1916)

Block 3, Lot 4

Feature 28 (cellar or refuse pit)



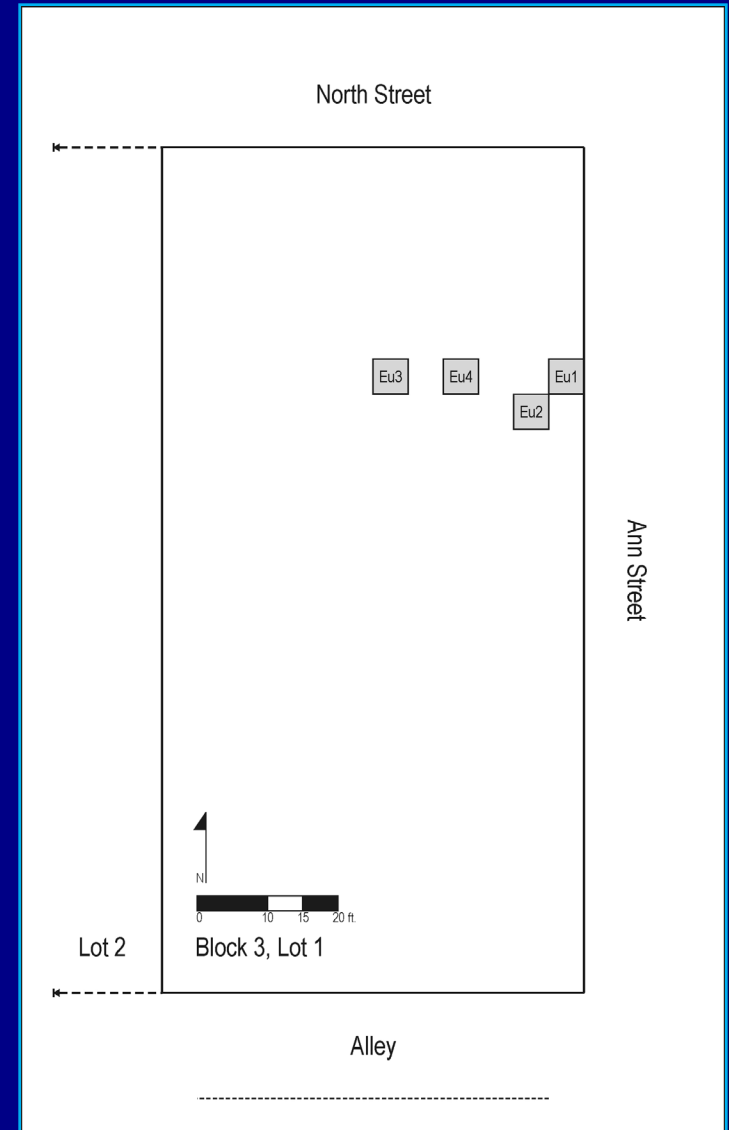
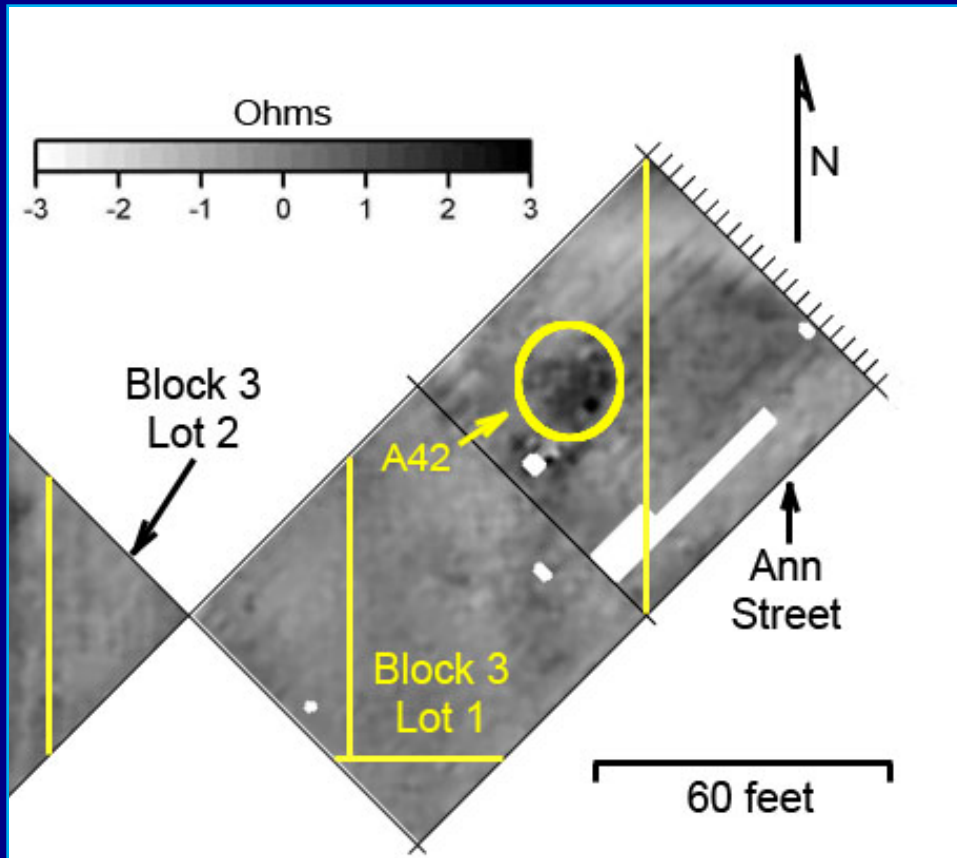
Pike Co. Ill.



Block 3, Lot 1

Possible waste pile from Blacksmith Shop in Block 3, Lot 1

Late 19th Century—
Squire McWorter, Jr.?



New Philadelphia Blacksmiths

Alexander Clark
(ca.1845-1870)

Benjamin Gray
(ca.1870-1885)

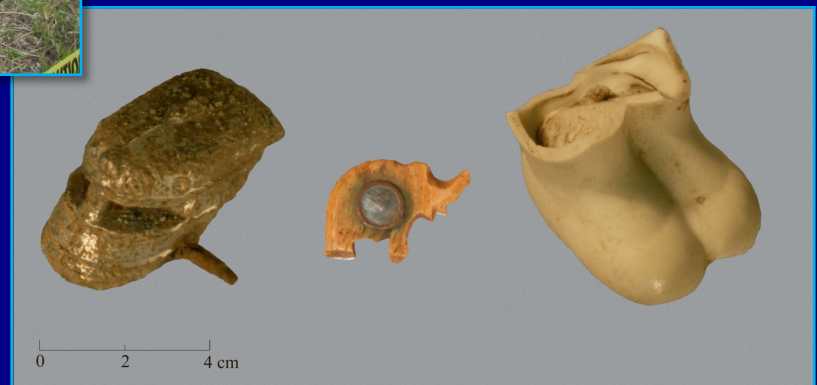
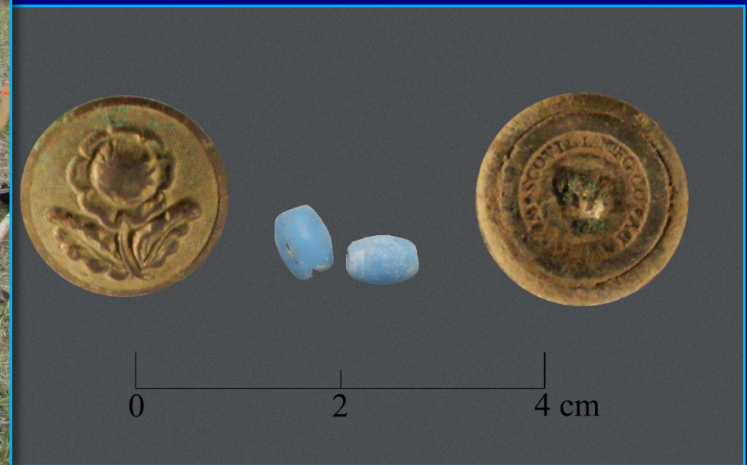
Squire McWorter, Jr.
(ca.1881-1910)



Block 3, Lot 7: 1880s-1930s



2006



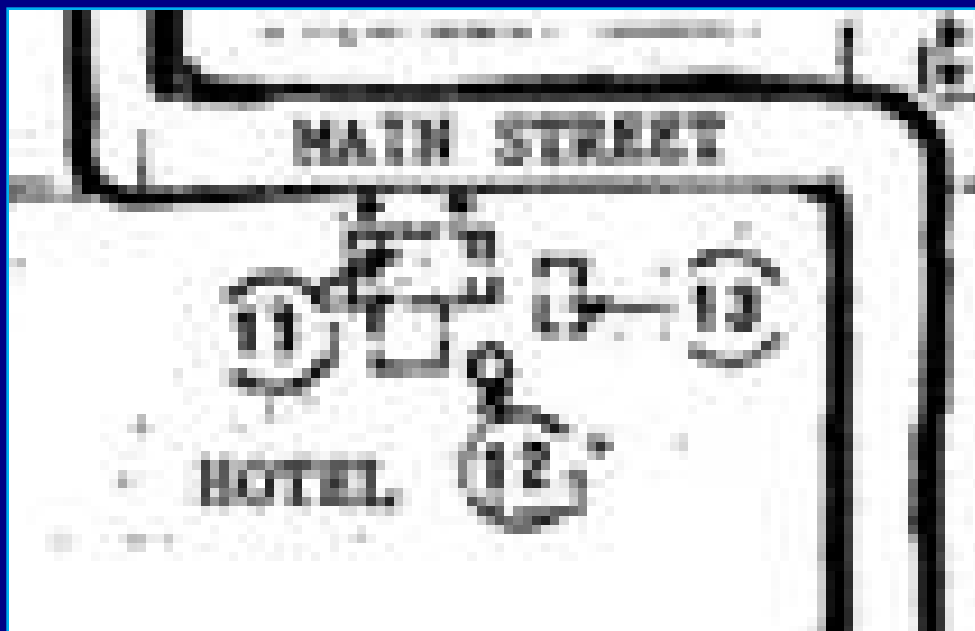
Louisa Clark McWorter House

ca. 1847-1857; 1866-1937



1824-1883
(wife/widow
of
Squire
McWorter)

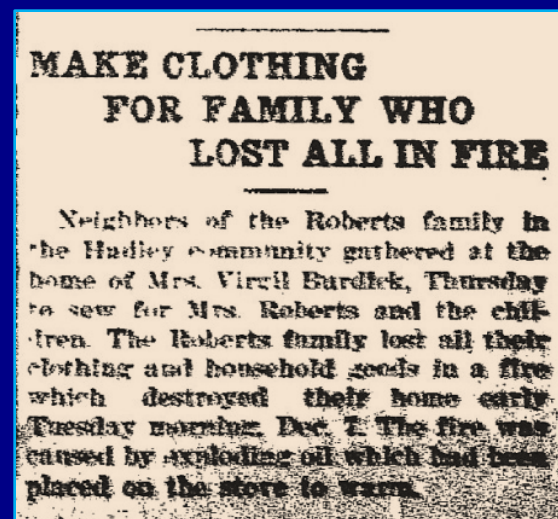




Portion of 1970s Burdick memory map showing Block 13, Lots 3 and 4, circa 1930s-1940s.



Barry Adage, December 8, 1937
Page 1



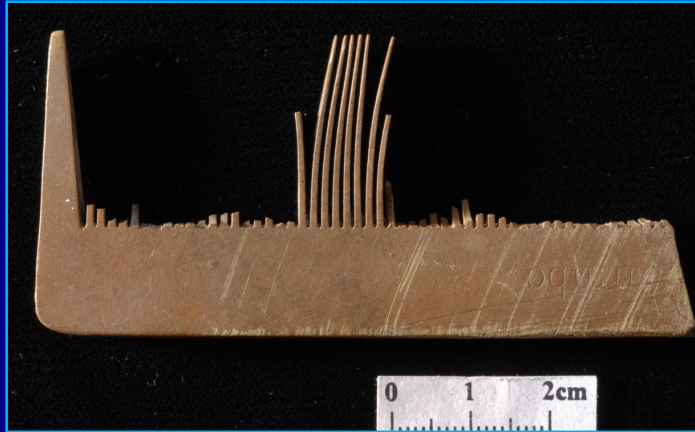
Barry Adage, December 15, 1937
Page 1



**Foundation of Louisa McWorter's
house on Block 13, Lot 4
(facing southwest, 2010)**



2011





Charred layer at bottom of cellar – late 1850s fire?

WOLVES!

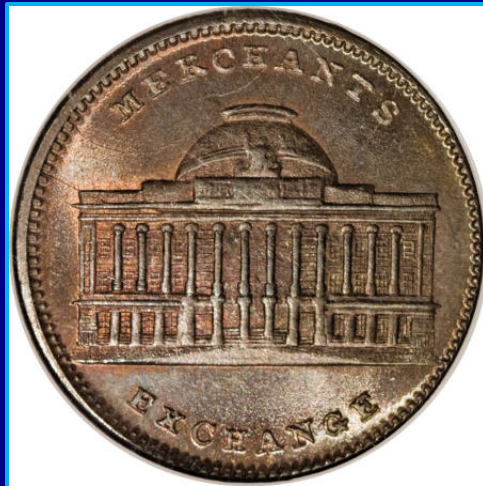
State of Illinois, } In county court,
Pike County. } Jan. Special Term 1850

Ordered that a bounty of ten dollars be paid for each full grown wolf scalp and two dollars for each whelp or young wolf scalp caught and killed in this county on satisfactory proof of the same, to continue until the first day of August next. [Extract from the record.]

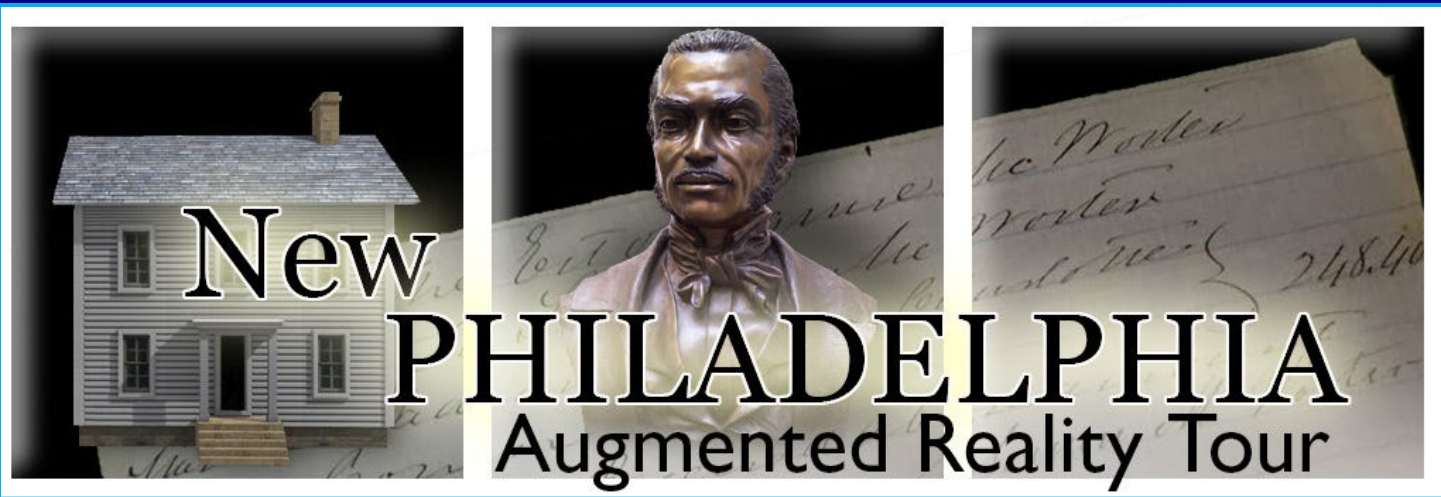
P. N. SHANKLAND, Clerk.
Feb. 6, 1850. - 4 w.

Knife-cut marks





1837 Merchants' Exchange ("Hard Times") Token



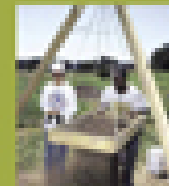
Funded by the National Park Service Network to Freedom
and the Illinois Rural Electric Cooperative

Archaeology helps place New Philadelphia in the national public memory

THE TOWN SITE
NEW PHILADELPHIA
FOUNDED
1836
BY
FREE FRANK MCWORTER
IS LISTED IN THE
**NATIONAL REGISTER
OF HISTORIC PLACES**
BY THE UNITED STATES
DEPARTMENT OF THE INTERIOR
AUGUST 11, 2005

Archaeology and African American Heritage:
Places on the Pathways of Freedom

Illinois Archaeology Awareness Month September 2009 www.IllinoisArchaeology.org



ARCHAEOLOGICAL
CONSERVANCY
LAND PURCHASE

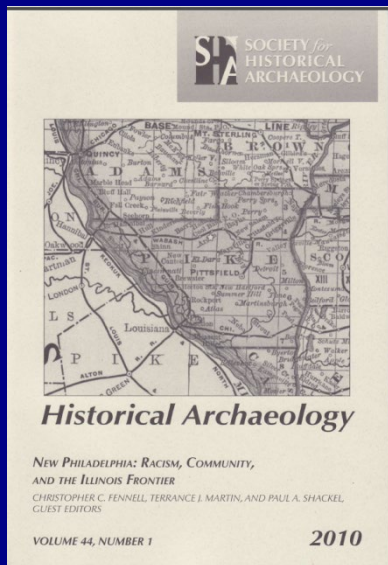
DESIGNATED
NATIONAL HISTORIC
LANDMARK
2009

SENATE BILL 1629:
FEASIBILITY STUDY

NATIONAL UNDERGROUND RAILROAD
NETWORK TO FREEDOM, 2013

Time Team America PBS Television Program (2008)





2010

Ph.D. dissertations:

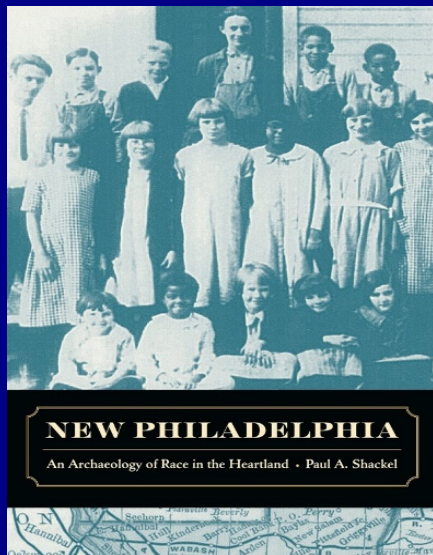
- Kathryn Fay (U of Illinois, 2016)
- Chris Valvano (Michigan State U, 2015)
- Mary Kathryn Rocheford (U of Iowa, 2014)

National magazine & journal articles:

Archaeology (2005),
Smithsonian (2005),
American Archaeology (2008, 2009, 2010)
J of African Diaspora Arch. and Heritage (2018)

Internet site for technical reports:

faculty.las.Illinois.edu/cfennell/NP/

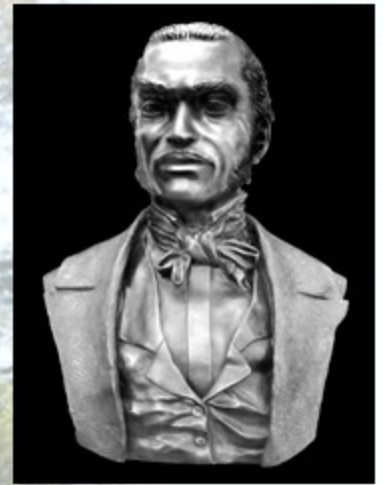


2011

Total of 80 undergraduate & graduate students contributed to excavations!



Join New Philadelphia's Land Campaign



Why?

Own the land free and clear, protected for all time
Make Congress's National Park Service decision easy
Match donors will double your money

How?

Send check to New Philadelphia Association,
PO Box 54, Barry, IL 61801

Use a card or Paypal at

<http://newphiladelphiail.org/join-or-donate/>