



# New Philadelphia, Illinois and Pleasant Ridge, Wisconsin: Slavery and Freedom in the Antebellum Midwest

Dr. Eugene Tesdahl

Associate Professor of History

University of Wisconsin-Platteville

New Philadelphia,  
Illinois  
and Pleasant Ridge,  
Wisconsin:  
Slavery and Freedom  
in the Antebellum  
Midwest

- I. Confronting Myths
- II. Restoring Personhood
- III. Growth



Neewe

(Myaamia/Illini)

Ketêpihipwa

(Meskwaki)

Migwéch

(Neshnabek)

<http://newphiladelphiail.org/join-or-donate/>



New  
Philadelphia

Est. 1836

Join Today

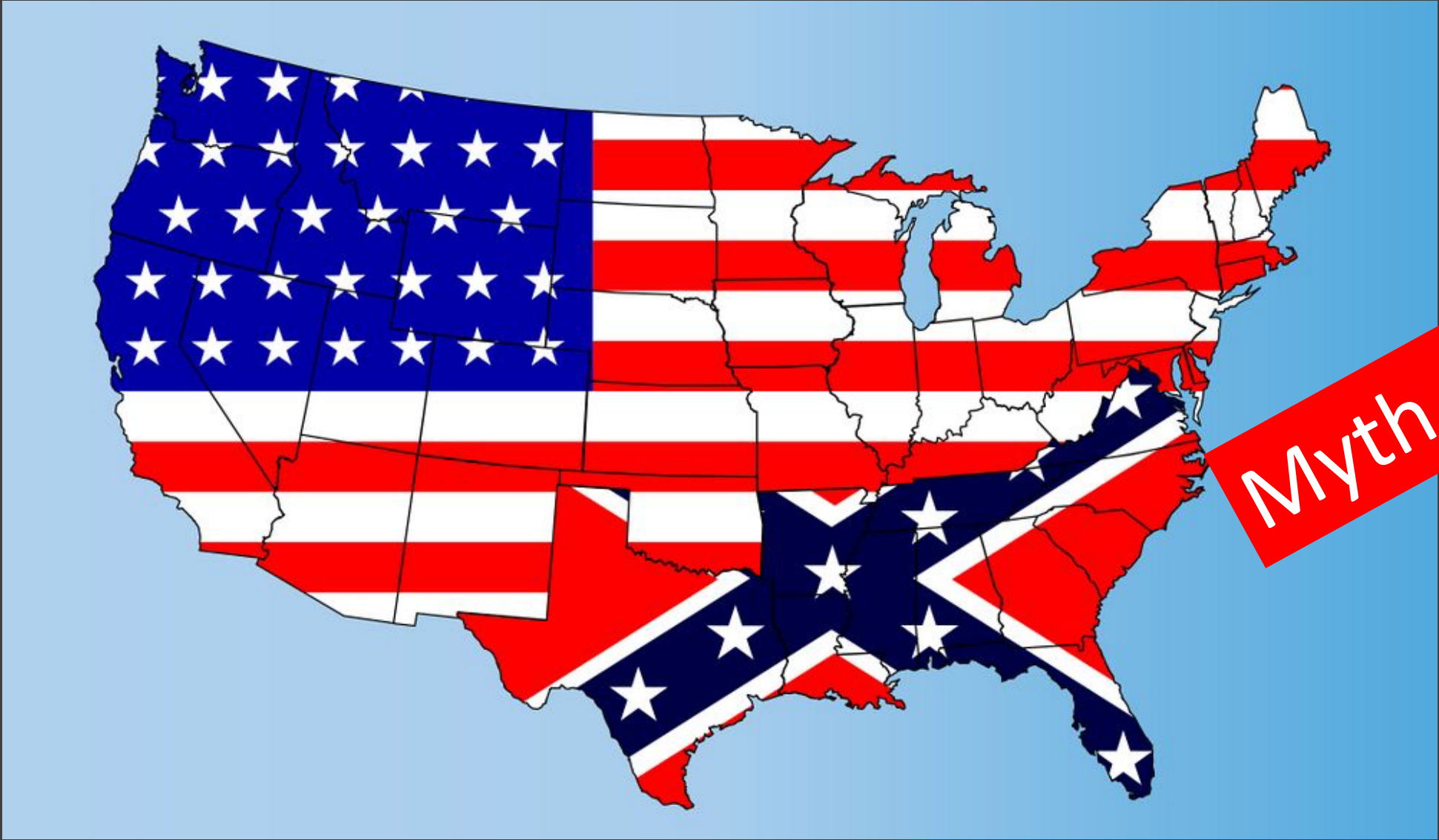


# I. Confronting Myths



Myth #1

Martin Luther King, Jr., motorcade, Chicago Freedom Movement July 10, 1966, Chicago Urban League Photos, University of Illinois at Chicago



Myth #2

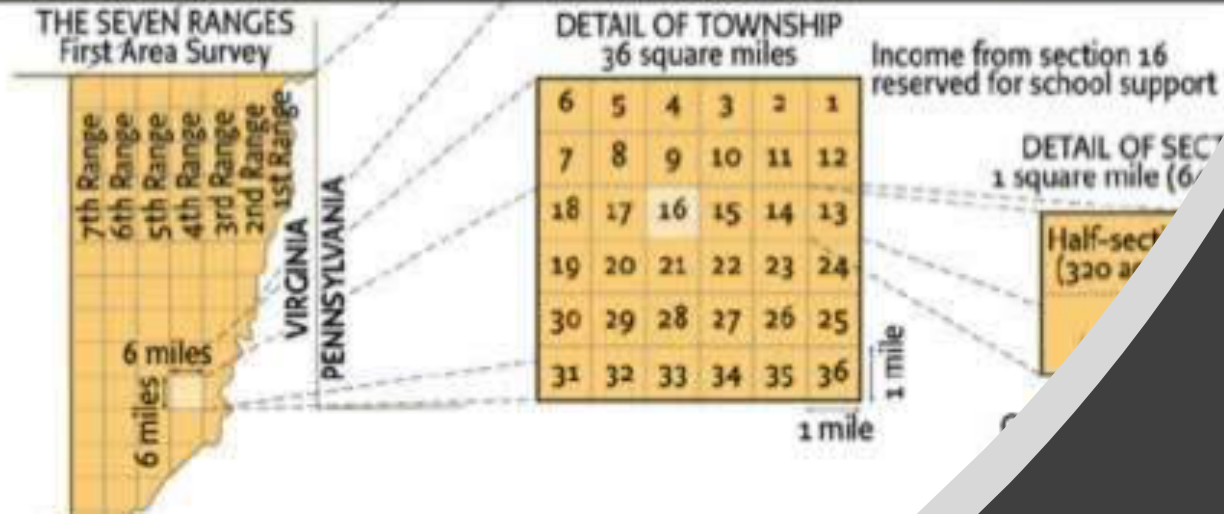


“There shall be neither slavery  
nor involuntary servitude in  
the said territory.”

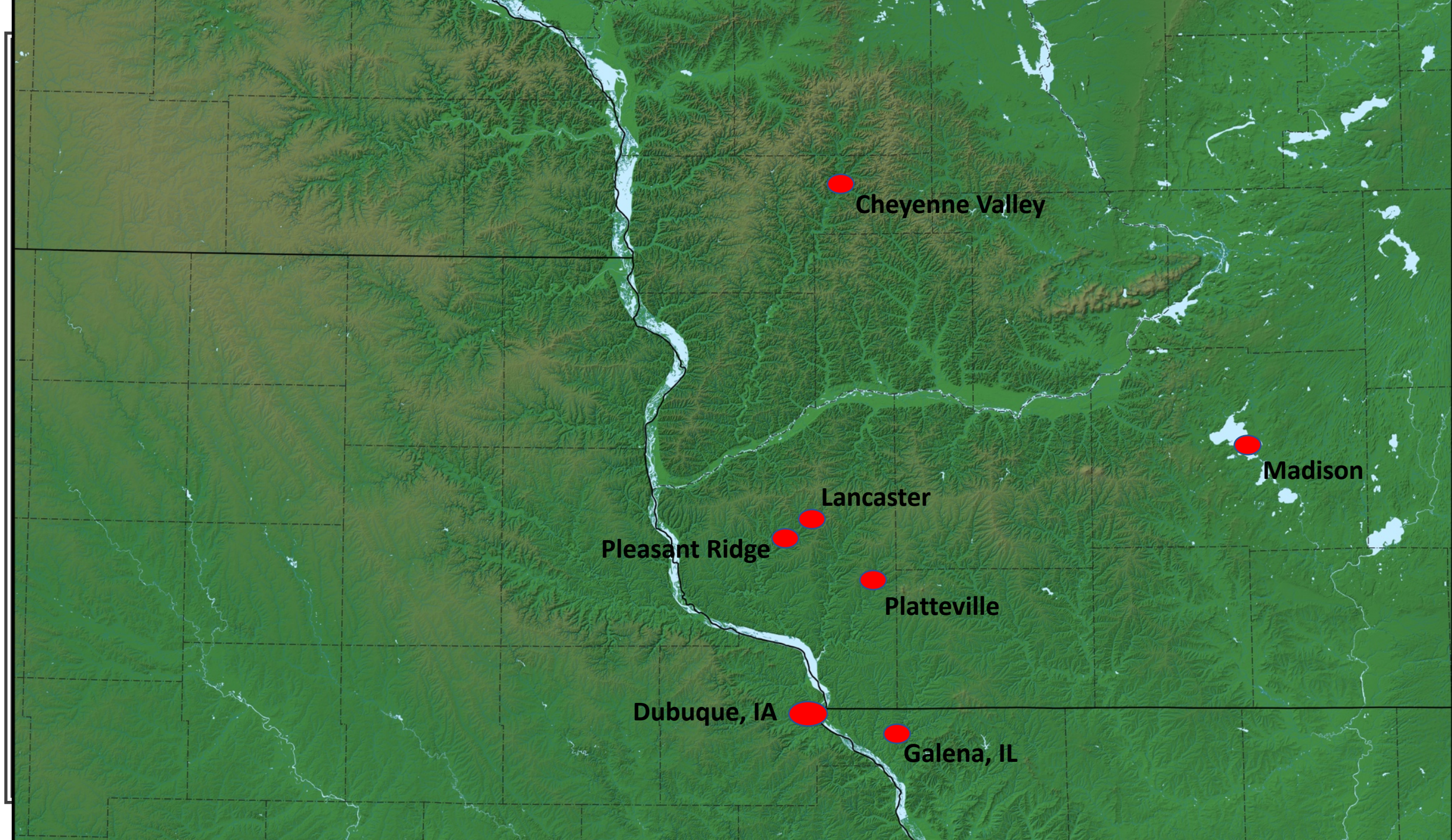
Article 6 of the Northwest Ordinance, 1787



# NW Ordinance 1787









# Map of U.S. Lead Mines on Upper Mississippi River, R.W. Chandler, Galena, Illinois, 1829.

This tract of country upon the high lands is gently rolling, but as you approach the larger water courses it becomes more and more hilly, terminating in high, calcareous bluffs along their margins. About one third is first rate farming land. Not more than a tenth is covered with timber, which grows in detached groves; the balance prairie. Springs of the purest water are to be found in abundance. The interior is healthy; no local causes of fever exist except immediately on the Mississippi. The climate is pleasant & desirable except during the spring months. Snow seldom exceeds 12 inches in depth during winter. All the fruits, vegetables and grain which grow in the same latitude in our Eastern States, would succeed equally well here.

The mounds delineated on the map are natural formations rising several hundred feet above the level of the country, some one of which may be seen from almost every part of the mines. serving as natural beacons to direct the traveller in his course.

Amount of Lead manufactured

lbs.	In 1825
689 473	26
1560 536	27
6324 339	28
12957 100	29
2894 444	

Estimated number of inhabitants.

	In 1825
200	26
1000	27
10000	28

About six families, & 100 are free blacks.

The United States have the Fee Simple in part, and the right to occupy the whole of the country between the Wisconsin and the surveyed lands south of Rock river; and the line marked along Sugar creek to the Mississippi Commissioners are appointed for the purpose of extinguishing the Indian title to the whole in the course of the summer, for the sale of which, the Government has made no provision except a section upon which stands the town of Galena.

The mines are worked by private individuals, who pay the Government for such privilege, a tenth of all the lead manufactured. The Superintendent has the power of prescribing such rules, as will prevent disputes, and secure the Government, against waste and fraud, to which all who engage in mining are bound to subscribe.

A lot of 200 yards square is allowed to every two miners, and one in addition for every two hands employed, (to be located & staked off by the miners on any unoccupied ground,) which may be abandoned at pleasure and another taken. The occupants have the exclusive benefit of their own discoveries, but are restricted in the sale of their mineral to a licensed smelter, who is obliged to give bond in a penalty of \$10,000, to pay the Government a 10th of all the lead he manufactures. Leases of half a section for three years, may be obtained on bonds of \$2000, with a like condition.

Miners are entitled to the free use of timber for building and fuel. Smelters are allowed sufficient to carry on their works. Lessees can only use for smelting on their half sections, but if there should be no timber, they must sell their mineral to a smelter.

The same person may either mine, lease, or smelt, or all together.

Farming is permitted free of rent, where ever it can be done without interfering with the timber need of for mining purposes. Mining is as simple a process, as the common method of digging wells.

## REFERENCE.

- Furnaces or Smelting establishments.
- Discoveries of Mineral or Lead ore.
- Roads.
- Copper.
- East line of the purchase lately made at Prairie du Chien.



Galena is the seat of Justice of JO. DAVIESS CO. & principal depot of the mines. Contains about 250 houses & 400 inhabitants. The mail arrives weekly in stages from St. Louis & private boats run from Galena to every part of the mining district.

In 1828 there were 80 arrivals of Steam boats & 74 boats at the port of Galena. Macaubie is the Indian name for the river on which Galena is situated, and when translated into English, means — Small Fox, or more literally, a Fever that Blister, & was so named from the circumstance of several hundred of the natives dying there of that disease, and there being no characteristic to justify naming it Fever river, or Boon river, as translated from the French, no reason known why the original name should not have the preference.

Copper ore (Sulphure) has been found in its original deposit, in such quantities, and over such an extent of this country, as to justify the expectation of that metal being produced in considerable quantities.

(Facsimile to accompany Vol. XI., Wisconsin Historical Collections.)

**MAP**  
OF THE  
**United States**  
**LEAD MINES**  
ON THE  
**UPPER MISSISSIPPI RIVER.**

Drawn & Published by  
**R.W. CHANDLER OF GALENA.**

1829.

CINCINNATI.

Copyright secured



# The Power of Place

---



# African American Lead Miners in Wisconsin Project: 2017-2018

Deja Roberson, Tori Kosobucki,  
Simone Rand, Liz Larrison,  
Winifred Redfearn

---

Presented at Council on  
Undergraduate Research, Posters  
on the Hill Symposium  
U.S. House of Representatives,  
April 2018









# Celebrating Rachel Project: Summer 2019

Kaitlynn Niehaus, Brandon Snyder,  
Kelly Krowne, Keegan Miles,  
Joe Addante, Dylan Abernathy

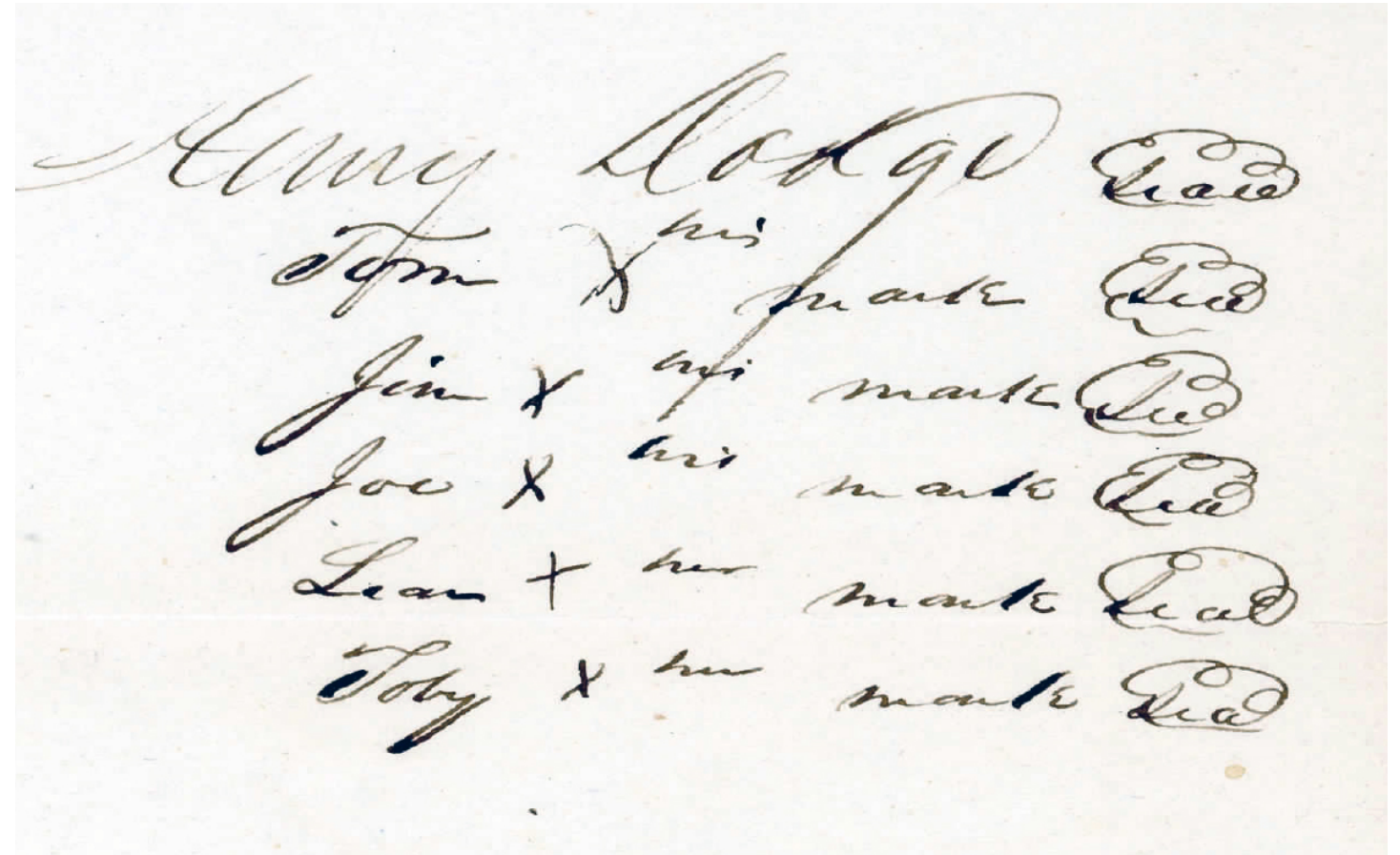




Manumission, 1838

Hearing Tom,  
Joe, Jim, Lear,  
and Toby

---



A handwritten document in cursive script, likely a manumission record. The text is written on a single sheet of paper and lists six individuals, each followed by a circled 'L' and the word 'Lear'. The names are: Amy, Lodge, Tom, Jim, Joe, Lear, and Toby. Each name is followed by a circled 'L' and the word 'Lear'. The document is dated 1838.

Amy Lodge Lear  
Tom X his mark Lear  
Jim X his mark Lear  
Joe X his mark Lear  
Lear + her mark Lear  
Toby X her mark Lear



# Henry Dodge, ENSLAVER

Also, Founder of Dodgeville, First  
Territorial Governor of  
Wisconsin, and namesake of  
Governor Dodge State Park





# George W. Jones, ENSLAVER

Also, Founder of Sinsinawa,  
Territorial Representative for  
Michigan Territory, Territorial  
Representative for Wisconsin  
Territory, and First Senator for  
the state of Iowa.



The Court below doth over and adjudge, that the  
judgment of the Court below be reversed and that said Offense  
do leave and recover of and from the said Peff his costs and charges by him  
in and about this suit in the Court below and in this Court by him  
expended

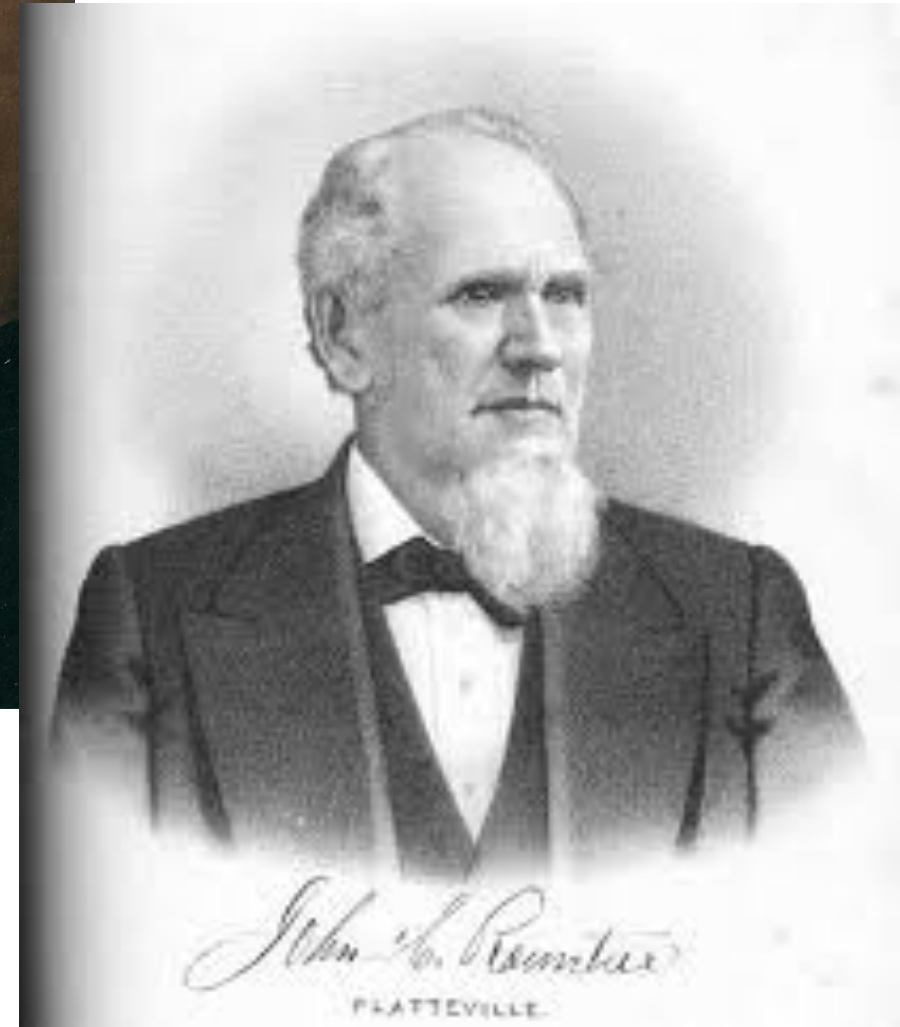
Paul Jones In accompsit  
man of color This day came as well the Off by his ally and  
George W Jones the said in his attorney - and there being a point  
in issue between the parties - The Court came a jury viz -  
Wisham Gooding Samuel Danons - Asst. Graham - Morgan  
Shull John Murray John Spears Thomas Williams - William  
McQuay William McDaniel Henry Miller - John McJury  
W. J. Redding - who being - elected tried said Deem the truth to  
speak upon the issue joined having heard all the proofs and  
allegations of the parties the arguments of counsel and the charge  
of the Court - retired to consider of their verdict - and  
having duly considered of the same returned into Court the  
following verdict viz -

"We the jury find for the defendant It is therefore considered  
and adjudge by the Court now here that said Peff do leave and  
recover of and from the said Peff the costs and charges by him  
in and about his defense expended and that he may have  
execution thereon

W. J. Redding  
John Wheeler This day came the said and on motion  
It is ordered that an attachment for

## John H. Rountree, ENSLAVER

Also founder of Platteville,  
State Representative of  
Wisconsin, and supporter  
of higher education in  
Platteville





# Rachel

Aug. 7, 1828

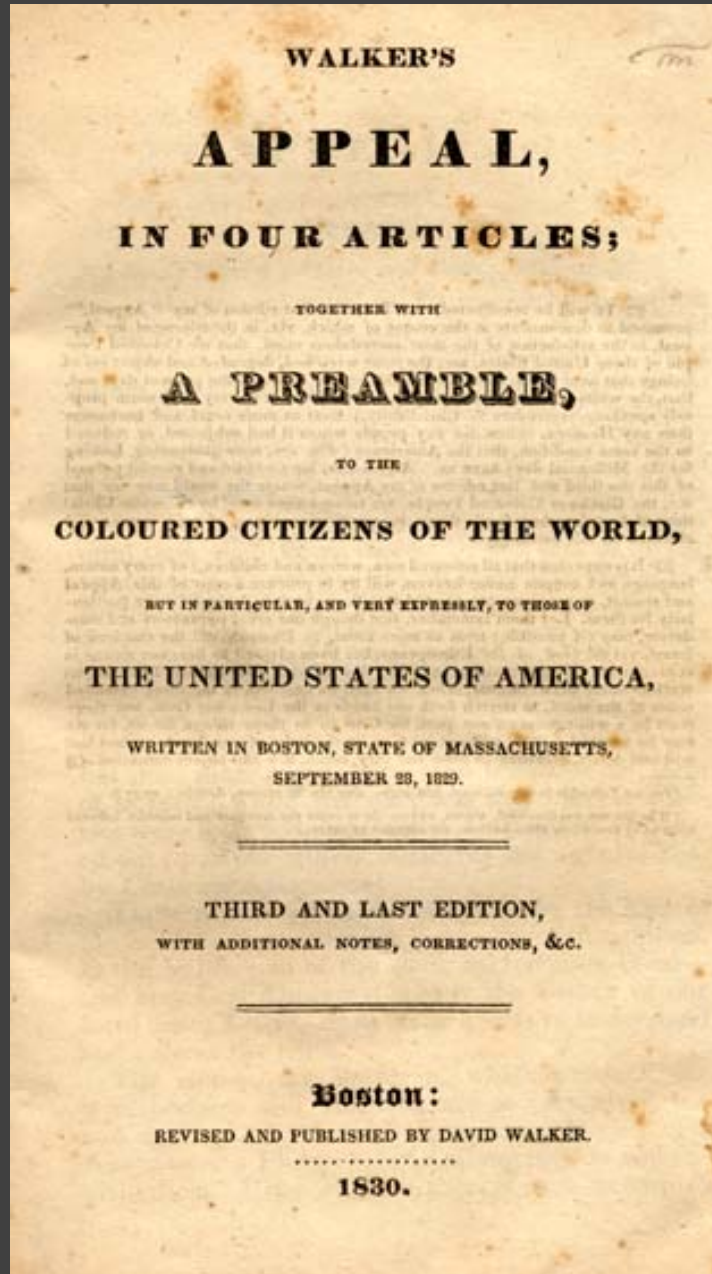
---

A gift?

79	81	John
		Sarah
		John
		Geo.
		Sarah
		Thos.
		E. J.
		Wm.
		Ann



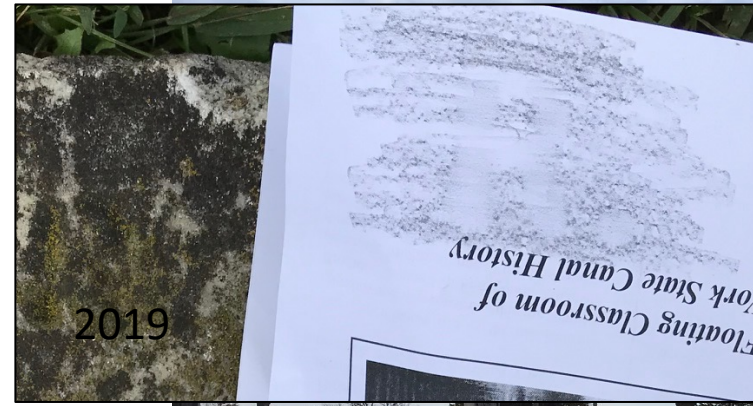
# David Walker's *Appeal*, 1829



“the whites are dragging us around in chains and in handcuffs, to their new States and Territories to work their mines and farms, to enrich them and their children...”



# Honoring Rachel

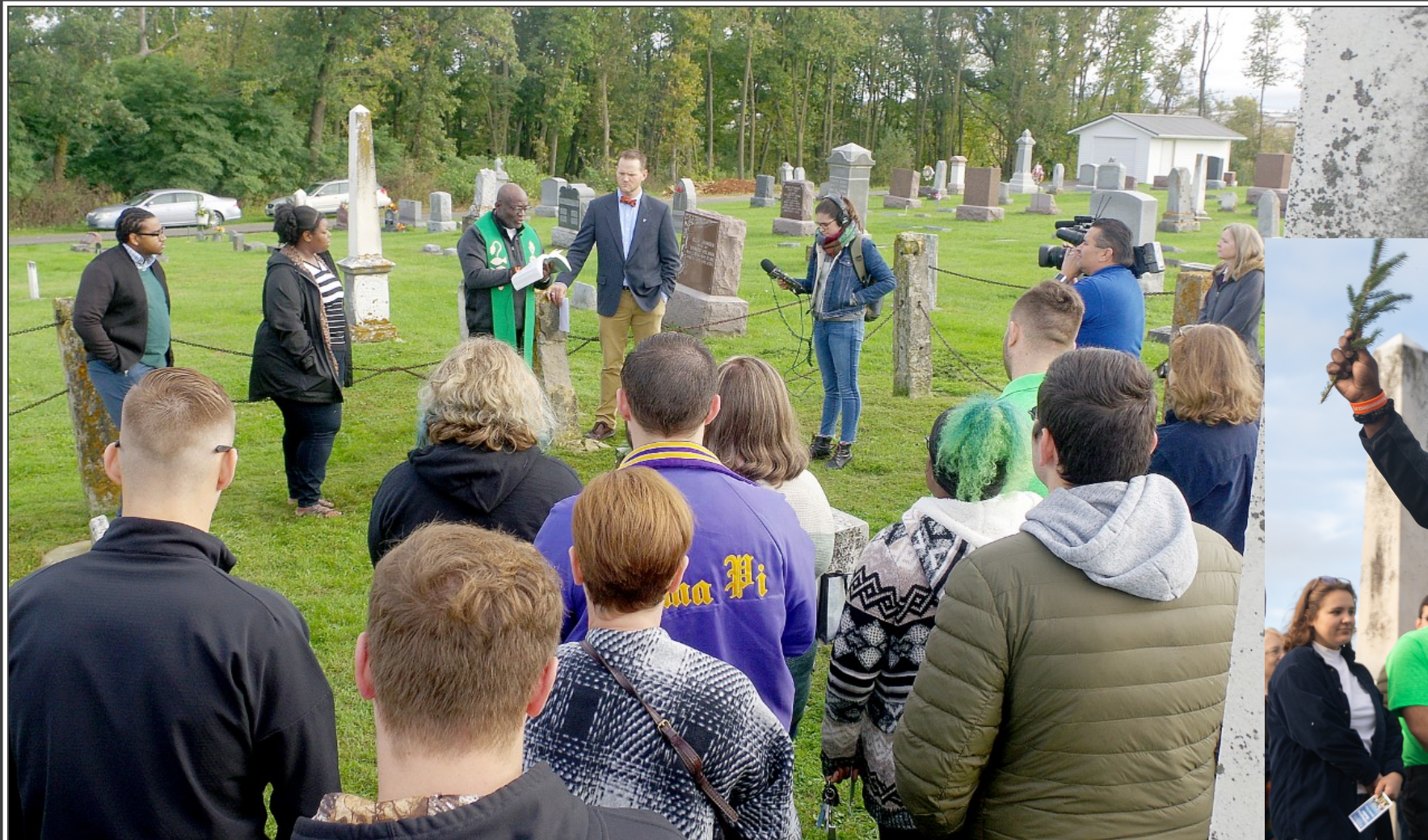




Ce







Rev. Gus Barnes



Rededicating Rachel's Gravestone  
Hillside Cemetery, Platteville, WI, Oct. 4, 2019



# Maria and Felix

The Sum of \$330  
20<sup>th</sup> day of May 1830

120  
Dr. Stephenson  
To 31<sup>st</sup> Dec 1829  
J. H. Panton  
I have all men by  
present that I have of the  
consider  
for one of three hundred  
and thirty dollars to me in and  
paid the receipt whereof is hereby  
acknowledged have this day  
of the County of Adams and State of Illinois  
J. H. Panton  
a negro girl (a mulatto) aged  
about ten years named Maria  
together with her son now a day  
about eighteen months and  
named Felix to have and to hold  
the said negro girl Maria and her  
son Felix forever unto the said  
John H. Panton his heirs and  
assigns together with the benefit  
of their services until the  
said Maria shall arrive at  
the age of twenty eight years  
and her son the said Felix at the  
age of twenty one at which  
time by the constitution and laws  
of Illinois State that the said Maria



[illegible]

# SAFETY

[illegible]



No.	Name	Age	Sex	Profession	Value	Residence	Remarks
79	John H. Kestree	45	m	Keeper	2000	Ry.	✓
81	Lucia M. -	32	f			M.	✓
	John M. -	14	m			Misc.	✓
	Geo. H. -	9	-				✓
	Sandra A. -	7	f				✓
	Philip S. -	1	m				✓
	E. H. Kennistore	27	-			Oa.	✓
	Hannah Williams	19	f			N.Y.	✓
	Emily Cunard	18	-			Eng.	✓
	Rachel	65	f	B.		M.	✓ 01

--	--	--	--	--	--	--	--	--	--	--	--	--	--	--	--	--	--	--	--	--	--	--	--	--	--	--	--	--	--	--	--	--	--	--	--	--	--	--	--	--	--	--	--	--	--	--	--	--	--	--	--	--	--	--	--	--	--	--	--	--	--	--	--	--	--	--	--	--	--	--	--	--	--	--	--	--	--	--	--	--	--	--	--	--	--	--	--	--	--	--	--	--	--	--	--	--	--	--	--	--	--	--	--	--	--	--	--	--	--	--	--	--	--	--	--	--	--	--	--	--	--	--	--	--	--	--	--	--	--	--	--	--	--	--	--	--	--	--	--	--	--	--	--	--	--	--	--	--	--	--	--	--	--	--	--	--	--	--	--	--	--	--	--	--	--	--	--	--	--	--	--	--	--	--	--	--	--	--	--	--	--	--	--	--	--	--	--	--	--	--	--	--	--	--	--	--	--	--	--	--	--	--	--	--	--	--	--	--	--	--	--	--	--	--	--	--	--	--	--	--	--	--	--	--	--	--	--	--	--	--	--	--	--	--	--	--	--	--	--	--	--	--	--	--	--	--	--	--	--	--	--	--	--	--	--	--	--	--	--	--	--	--	--	--	--	--	--	--	--	--	--	--	--	--	--	--	--	--	--	--	--	--	--	--	--	--	--	--	--	--	--	--	--	--	--	--	--	--	--	--	--	--	--	--	--	--	--	--	--	--	--	--	--	--	--	--	--	--	--	--	--	--	--	--	--	--	--	--	--	--	--	--	--	--	--	--	--	--	--	--	--	--	--	--	--	--	--	--	--	--	--	--	--	--	--	--	--	--	--	--	--	--	--	--	--	--	--	--	--	--	--	--	--	--	--	--	--	--	--	--	--	--	--	--	--	--	--	--	--	--	--	--	--	--	--	--	--	--	--	--	--	--	--	--	--	--	--	--	--	--	--	--	--	--	--	--	--	--	--	--	--	--	--	--	--	--	--	--	--	--	--	--	--	--	--	--	--	--	--	--	--	--	--	--	--	--	--	--	--	--	--	--	--	--	--	--	--	--	--	--	--	--	--	--	--	--	--	--	--	--	--	--	--	--	--	--	--	--	--	--	--	--	--	--	--	--	--	--	--	--	--	--	--	--	--	--	--	--	--	--	--	--	--	--	--	--	--	--	--	--	--	--	--	--	--	--	--	--	--	--	--	--	--	--	--	--	--	--	--	--	--	--	--	--	--	--	--	--	--	--	--	--	--	--	--	--	--	--	--	--	--	--	--	--	--	--	--	--	--	--	--	--	--	--	--	--	--	--	--	--	--	--	--	--	--	--	--	--	--	--	--	--	--	--	--	--	--	--	--	--	--	--	--	--	--	--	--	--	--	--	--	--	--	--	--	--	--	--	--	--	--	--	--	--	--	--	--	--	--	--	--	--	--	--	--	--	--	--	--	--	--	--	--	--	--	--	--	--	--	--	--	--	--	--	--	--	--	--	--	--	--	--	--	--	--	--	--	--	--	--	--	--	--	--	--	--	--	--	--	--	--	--	--	--	--	--	--	--	--	--	--	--	--	--	--	--	--	--	--	--	--	--	--	--	--	--	--	--	--	--	--	--	--	--	--	--	--	--	--	--	--	--	--	--	--	--	--	--	--	--	--	--	--	--	--	--	--	--	--	--	--	--	--	--	--	--	--	--	--	--	--	--	--	--	--	--	--	--	--	--	--	--	--	--	--	--	--	--	--	--	--	--	--	--	--	--	--	--	--	--	--	--	--	--	--	--	--	--	--	--	--	--	--	--	--	--	--	--	--	--	--	--	--	--	--	--	--	--	--	--	--	--	--	--	--	--	--	--	--	--	--	--	--	--	--	--	--	--	--	--	--	--	--	--	--	--	--	--	--	--	--	--	--	--	--	--	--	--	--	--	--	--	--	--	--	--	--	--	--	--	--	--	--	--	--	--	--	--	--	--	--	--	--	--	--	--	--	--	--	--	--	--	--	--	--	--	--	--	--	--	--	--	--	--	--	--	--	--	--	--	--	--	--	--	--	--	--	--	--	--	--	--	--	--	--	--	--	--	--	--	--	--	--	--	--	--	--	--	--	--	--	--	--	--	--	--	--	--	--	--	--	--	--	--	--	--	--	--	--	--	--	--	--	--	--	--	--	--	--	--	--	--	--	--	--	--	--	--	--	--	--	--	--	--	--	--	--	--	--	--	--	--	--	--	--	--	--	--	--	--	--	--	--	--	--	--	--	--	--	--	--	--	--	--	--	--	--	--	--	--	--	--	--	--	--	--	--	--	--	--	--	--	--	--	--	--	--	--	--	--	--	--	--	--	--	--	--	--	--	--	--	--	--	--	--	--	--	--	--	--	--	--	--	--	--	--	--	--	--	--	--	--	--	--	--	--	--	--	--	--	--	--	--	--	--	--	--	--	--	--	--	--	--	--	--	--	--	--	--	--	--	--	--	--	--	--	--	--	--	--	--	--	--	--	--	--	--	--	--	--	--	--	--	--	--	--	--	--	--	--	--	--	--	--	--	--	--	--	--	--	--	--	--	--	--	--	--	--	--	--	--	--	--	--	--	--	--	--	--	--	--	--	--	--	--	--	--	--	--	--	--	--	--	--	--	--	--	--	--	--	--	--	--	--	--	--	--	--	--	--	--	--	--	--	--	--	--	--	--	--	--	--	--	--	--	--	--	--	--	--	--	--	--	--	--	--	--	--	--	--	--	--	--	--	--	--	--	--	--	--	--	--	--	--	--	--	--	--	--	--	--	--	--	--	--	--	--	--	--	--	--	--	--	--	--	--	--	--	--	--	--	--	--	--	--	--	--	--	--	--	--	--	--	--	--	--	--	--	--	--	--	--	--	--	--	--	--	--	--	--	--	--	--	--	--	--	--	--	--	--	--	--	--	--	--	--	--	--	--	--	--	--	--	--	--	--	--	--	--	--	--	--	--	--	--	--	--	--	--	--	--	--	--	--	--	--	--	--	--	--	--	--	--	--	--	--	--	--	--	--	--	--	--	--	--	--	--	--	--	--	--	--	--	--	--	--	--	--	--	--	--	--	--	--	--	--	--	--	--	--	--	--	--	--	--

# 1850, Census

1834 (IL)  
1837 (WI Territory)  
Fort Snelling

---

Scott v. Emerson,  
1847  
Dred Scott Case,  
1857





# The Curious Case of Paul Jones Lancaster, WI 1839-1840

Freed in 1842

the Court below doth order and adjudge, that the  
judgment of the Court below be reversed and that said Offence do  
do have and recover of and from the deft his costs and charges by him  
in and about this suit in the Court below and in this Court by him  
expended

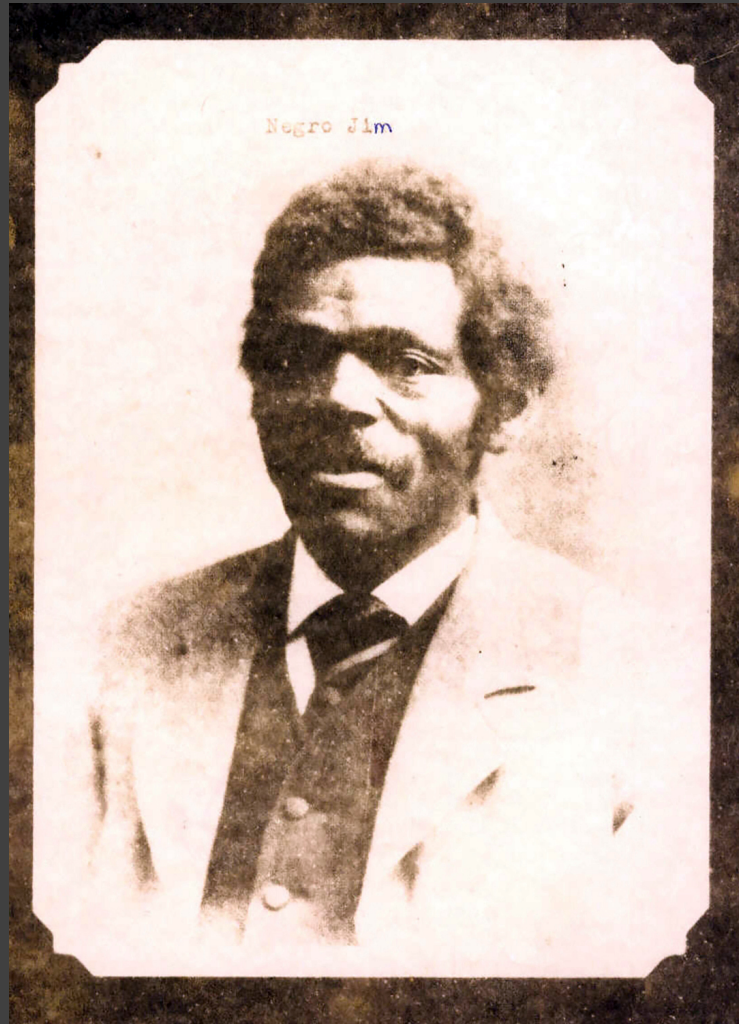
“trespass on a promise...”

Paul Jones  
man of colour  
George W Jones  
In assumpsit  
this day came as well the deft by his atty as  
the plaintiff in his attorney - and there being a joint  
or in issue between the parties - the Court came a jury viz -  
Wm. Goshing Samuel Danvers - Alexr. Graham - Morgan  
Shull John Murray John Spears Freeman Williams - William  
McAulay William McDaniel Harvey Miller - John McSally  
Wm. J. Anderson - who being elected tried and sworn the truth to  
speak upon the issue joined having heard all the proofs and  
allegations of the parties the arguments of counsel and the charge  
of the Court - retired to consider of their verdict - and  
having duly considered of the same returned into Court the  
following verdict viz -  
“We the jury find for the defendant” It is therefore considered  
and adjudge by the Court that said deft do have and  
recover of and from the said Peff the costs and charges by him  
in and about his defence expended and that he may have  
execution therefor

Mr. J. Anderson vs  
John Wheeler  
This day came the deft and on motion  
It is ordered that an attachment for



# Honoring James Williams and America Jenkins

















# Pleasant Ridge

- Formerly enslaved African American families founded the village of Pleasant Ridge, Wisconsin in 1848. It was thriving by 1850 with one of the first integrated schools East of the Mississippi by 1873.
- Charles and Caroline Shepard and Isaac and Sarah Shepard came from Virginia, along with dozens of others largely from Missouri. They founded the community for new opportunities. This included members of the Greene and Grimes Families.
- Several members of the community served Wisconsin in the Civil War.
- Other black families came to Pleasant Ridge fleeing the repeal of Reconstruction in the South by 1877.





# MEN OF COLOR TO ARMS! TO ARMS! NOW OR NEVER

This is our golden moment! The Government of the United States calls for every patriotic colored man to enter the Army for three

## Three Years' Service!

And join in fighting the battles of Liberty and the Union. A man who fights at the front, the government will not afford him the benefits of military training and strategy, and without his help, the Union cannot stand. The colored man who fights at the front, the government will not afford him the benefits of military training and strategy, and without his help, the Union cannot stand. The colored man who fights at the front, the government will not afford him the benefits of military training and strategy, and without his help, the Union cannot stand.

## FAIL NOW, & OUR RACE IS DOOMED

Remember the words of the great leader, Frederick Douglass: "If we do not fight, we are no longer men." The colored man who fights at the front, the government will not afford him the benefits of military training and strategy, and without his help, the Union cannot stand. The colored man who fights at the front, the government will not afford him the benefits of military training and strategy, and without his help, the Union cannot stand. The colored man who fights at the front, the government will not afford him the benefits of military training and strategy, and without his help, the Union cannot stand.

## ARE FREEMEN LESS BRAVE THAN SLAVES

The colored man who fights at the front, the government will not afford him the benefits of military training and strategy, and without his help, the Union cannot stand. The colored man who fights at the front, the government will not afford him the benefits of military training and strategy, and without his help, the Union cannot stand. The colored man who fights at the front, the government will not afford him the benefits of military training and strategy, and without his help, the Union cannot stand.

A. B. Smith	W. A. Johnson	P. J. Anderson	W. A. Smith	W. A. Smith
W. A. Johnson	W. A. Johnson	W. A. Johnson	W. A. Johnson	W. A. Johnson
W. A. Johnson	W. A. Johnson	W. A. Johnson	W. A. Johnson	W. A. Johnson
W. A. Johnson	W. A. Johnson	W. A. Johnson	W. A. Johnson	W. A. Johnson
W. A. Johnson	W. A. Johnson	W. A. Johnson	W. A. Johnson	W. A. Johnson

179,000  
African American  
men served

- “Our union Friends says ... we are fighting for the union...very well let the white fight for what the[y] want and we negroes fight for what we want... Liberty must take the day and nothing Shorter.”

a colored man,  
New Orleans 1863

# \$10 not \$13 a month

In 1863, Charles Shepard and his son, John, both walked to Prairie du Chien, WI to enlist in the Union Army (USCT (United States Colored Troops)). Charles Shepard was with the 50th U.S. Infantry Regiment and died at Vicksburg, MS. John Shepard, a private in Company K, 42nd Regiment, died of disease at Cairo, IL at the end of the war, on his way home to **Pleasant Ridge**, Wisconsin.



African American  
Civil War Soldiers Memorial, D.C.





Pleasant Ridge School, Grant Co., WI, 1890



# Memory Keeping

A painting of New  
Philadelphia  
by memory keeper  
Thelma McWorter  
Kirkpatrick Wheaton







**Lucy Ann McWorter Vond, daughter of Free Frank, and her husband, near New Philadelphia, Illinois, 1800s**

*Courtesy of Pamela and Sheena Franklin*

University of  
Southern Illinois

*Many Voices  
Exhibition*



# Memory Keepers

McWorter  
Descendants  
In northern  
California



Images from Kate Williams-McWorter



# Memory Keepers

McWorter  
Descendants  
From Kansas,  
Illinois, Colorado,  
Texas,  
and California



Images from Kate Williams-McWorter



What can you do?

---



# Craft Community Partnerships

UW-Platteville:

Vice Chancellor, Melissa Gormley  
Dr. Adam Stanley, History Dept. Chair  
Dr. Frank King, Ethnic Studies Dept.  
UWP – Black Student Union  
SW Wisconsin Room

Clayborn, Benson, Wisconsin Black Historical Society  
and Museum

---

Rev. Gus Barnes

Dr. Rachel Lewis

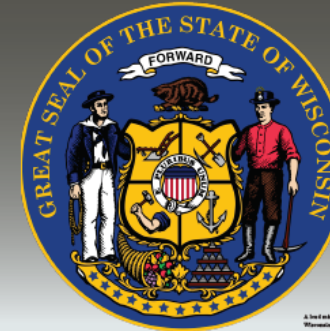
Tracey Roberts, Grant Co. Historical Soc.

Mining and Rollo Jamison Museums

Dr. Christy Clark-Pujara, UW-Madison

## Mining and Rollo Jamison Museums Exhibit

### African American Lead Miners in Wisconsin



A lead miner and a black "digger" are prominently featured on the Wisconsin State Seal, adopted in 1848.



Lead mining in the Driftless Region transformed Wisconsin into a territory and then a state by 1848. Ho-Chunk, Meskwaki, Sauk, and other native peoples occasionally mined lead ore prior to French exploration. Indigenous leaders worked with French Canadian prospectors by the late eighteenth century. By 1827, a lead rush engulfed the Driftless Region of the Upper Mississippi River Valley. This economic boom increased American settlement of Southwest Wisconsin and neighboring Iowa and Illinois. Among the early lead miners were an estimated 100 free and enslaved African Americans. The story of how black lead miners helped build the region is an essential story for the state of Wisconsin.

#### Slaves in Wisconsin...was that legal?

The 1787 Northwest Ordinance allowed for the creation of five new states. This was disastrous for Native nations. The Northwest Ordinance forbade slavery in the newly opened region. Lax enforcement ensured slavery remained in Wisconsin. Free and enslaved African Americans made vital contributions to early Wisconsin despite flawed legislation and practice.



The lands covered by the Northwest Ordinance of 1787 include what are now all Ohio, Michigan, Indiana, Illinois, Wisconsin, and part of northern Minnesota.

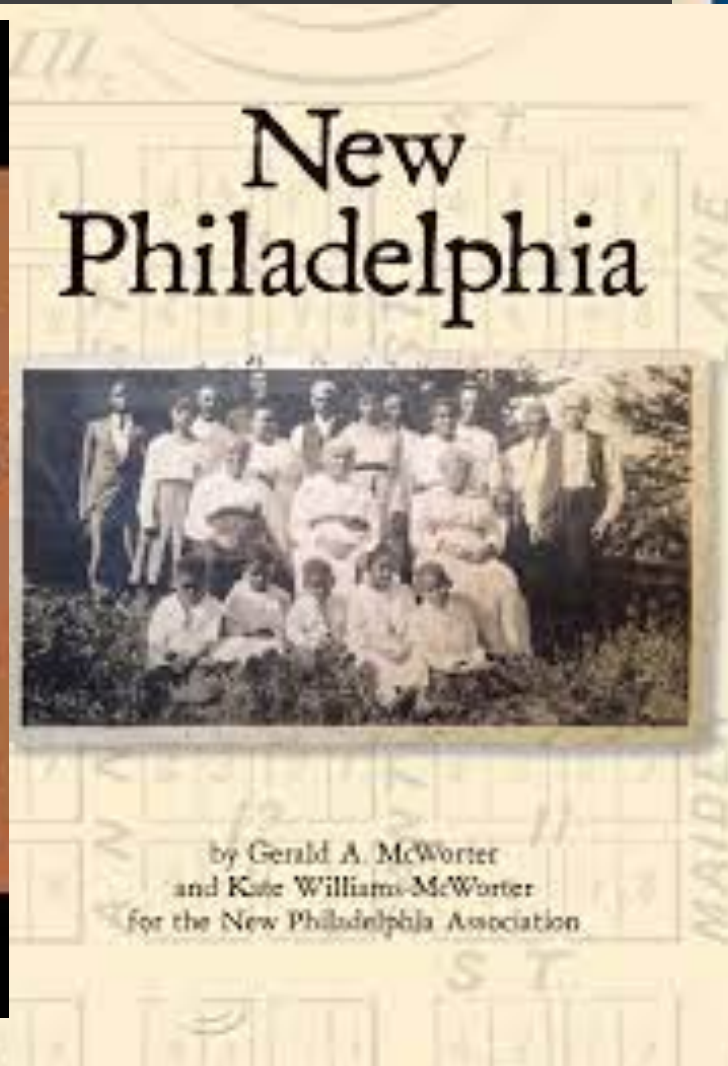
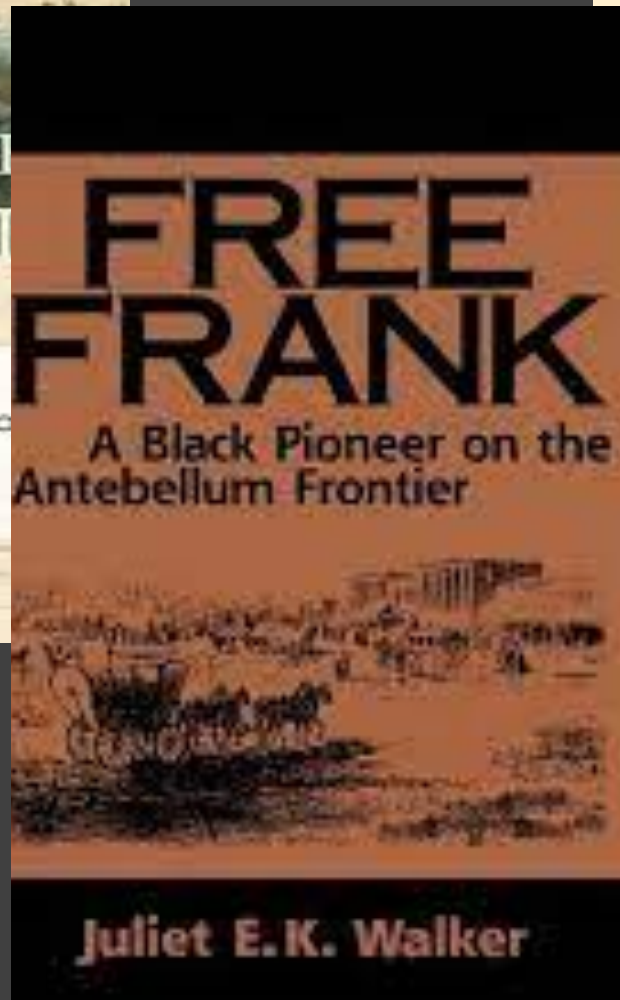
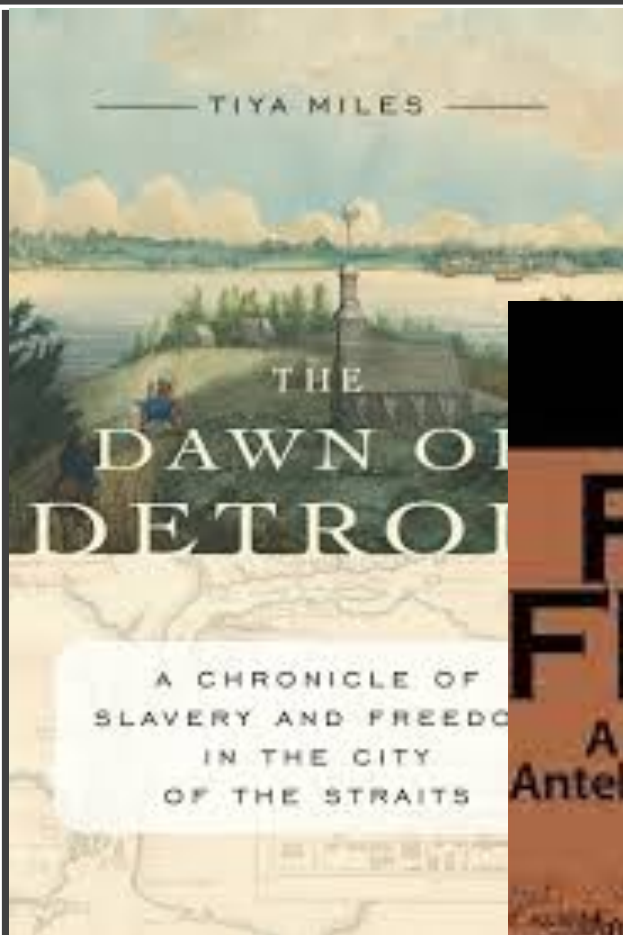
The Prairie du Chien Indian Agent, Joseph Street, complained to William Clark in 1828 that Dodge's illegal settlement and mining would upset the delicate diplomacy of the fur trade, especially amongst the Ho-Chunk nation. He stated that:

**"With two negro men in one place he [Henry Dodge] raises about 2,000 pounds [of lead] per day."**

The amount of money that white settlers could make quickly allowed them to force Native peoples off their lands.

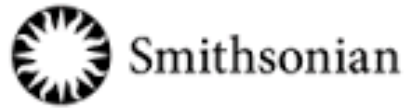
The lead boom of 1827 to 1849 brought over 100 African Americans and thousands of European Americans to the region. Prominent settlers such as Henry Dodge (Dodgeville), John Rountree (Platteville), and George W. Jones (Sinsinawa) came to the region in the 1820s to mine and process lead. They brought with them, as part of their family units, enslaved men and women.

# Read these Books





# Amplify Black History



**WISCONSIN BLACK  
HISTORICAL SOCIETY**

PRESERVING THE HISTORY OF AFRICAN AMERICANS IN WISCONSIN

